



Husbandry and breeding of
Heosemy spinosa
at
Durrell Wildlife Conservation Trust

Matt Goetz
Herpetology Department
Durrell Wildlife Conservation Trust



	CL	weight
R491 ♂	22.0	1,360
R572 ♀	19.5	1,190
R573 ♀	20.5	1,280
R571 ♂	28.0	3,070
R490 ♀	19.5	1,280
R492 ♀	20.5	1,490











Summer turtle feeds 2011

adult *H. spinosa*

Mon	Greens w/ fruit/veg
Tues.	Greens w/ carrot
Wed.	-----
Thurs.	Greens w/ fruit/veg
Fri.	Jelly w/greens
Sat.	-----
Sun.	Snails/Grubs/Jelly w/greens



hatchling *H. spinosa*

Mon	Greens w/ fruit/veg
Tues.	Greens w/ carrot
Wed.	-----
Thur.	Greens w/ fruit/veg
Fri.	Jelly w/ greens
Sat.	-----
Sun.	snails/grubs or Jelly

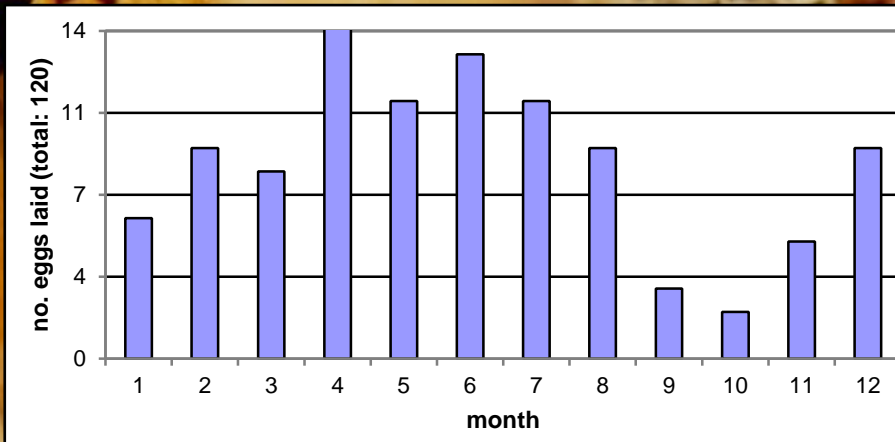
juv. *H. spinosa*

Greens w/ carrot

Greens w/ fruit/veg

snails/grubs or Jelly





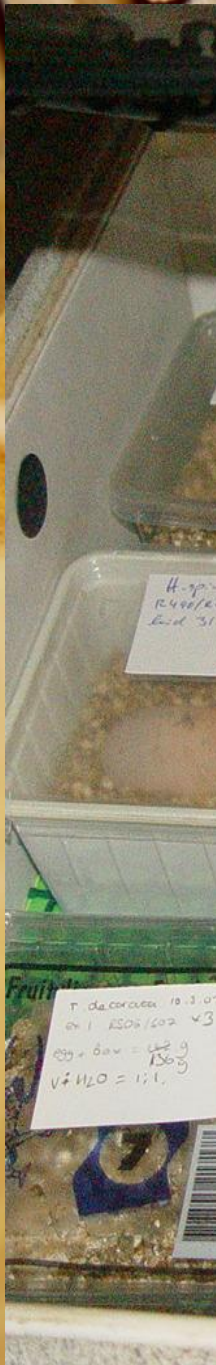
= 2 - 4 eggs / female / year

year	no. eggs laid (2.4 sps)	hatched
1995	4	-
1996	1	-
1997	1	-
1998	1	-
1999	6	-
2000	7	-
2001	3	-
2002	6*	(1)
2003	6	-
2004	9	1
2005	10	(1) + 1
2006	7	2
2007	13	2
2008	12*	(1) + 4
2009	10*	4
2010	11	6
2011	13*	6



average: 51g, 67 x 34mm





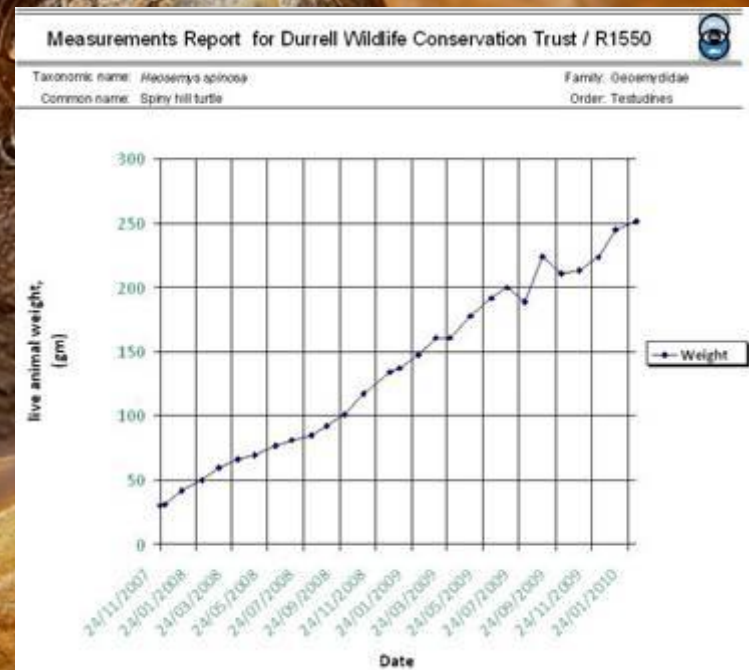
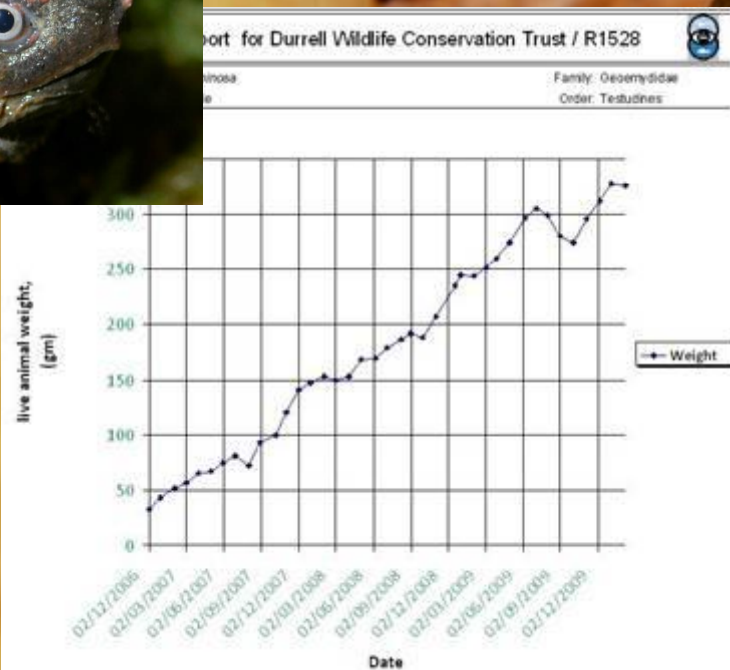
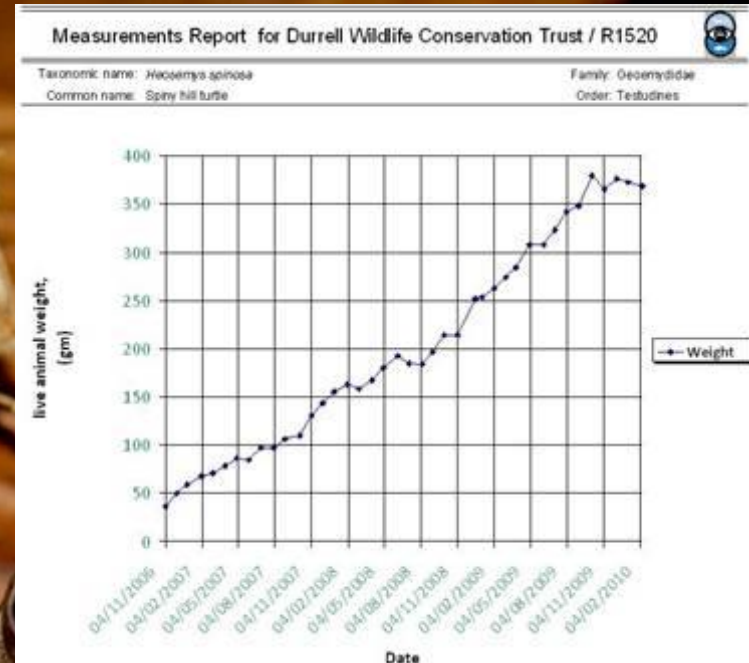
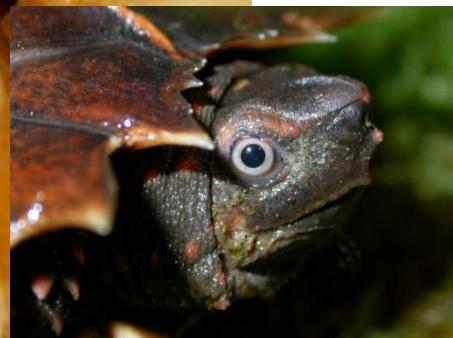


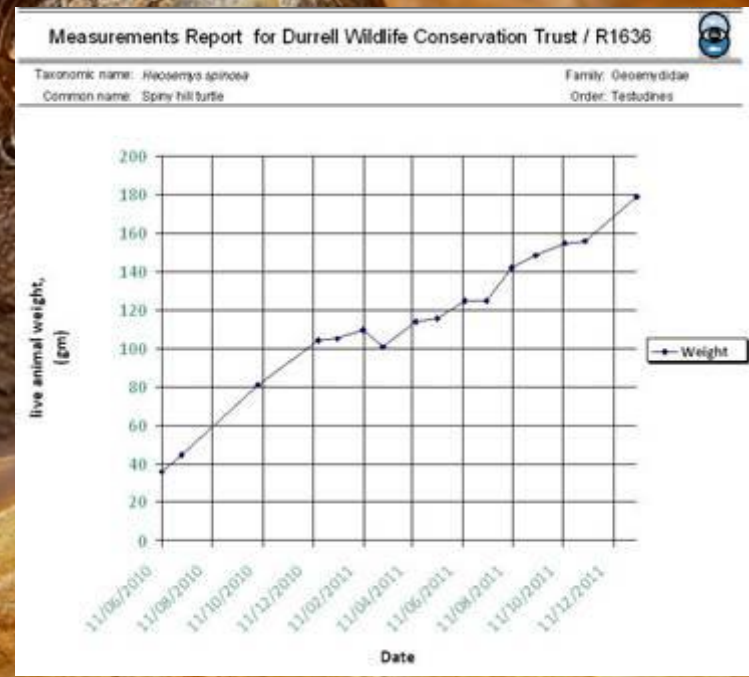
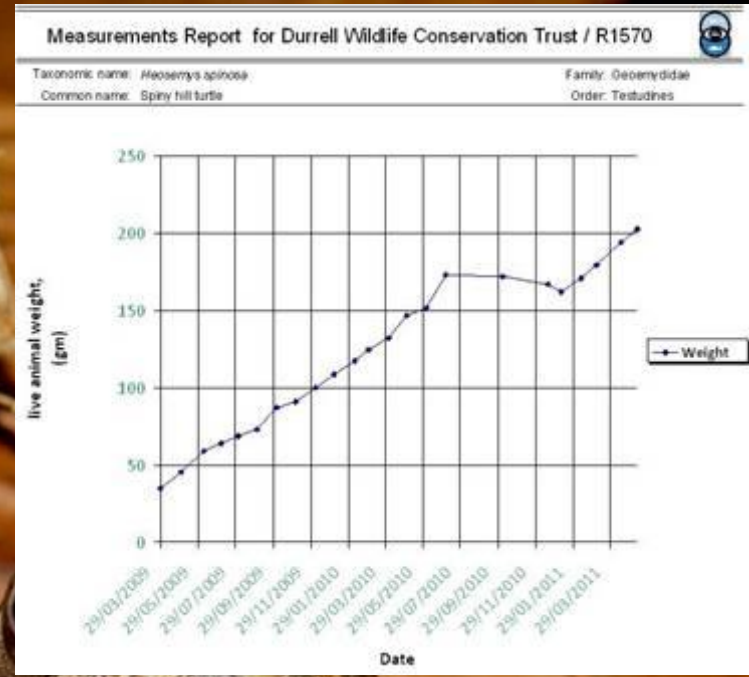






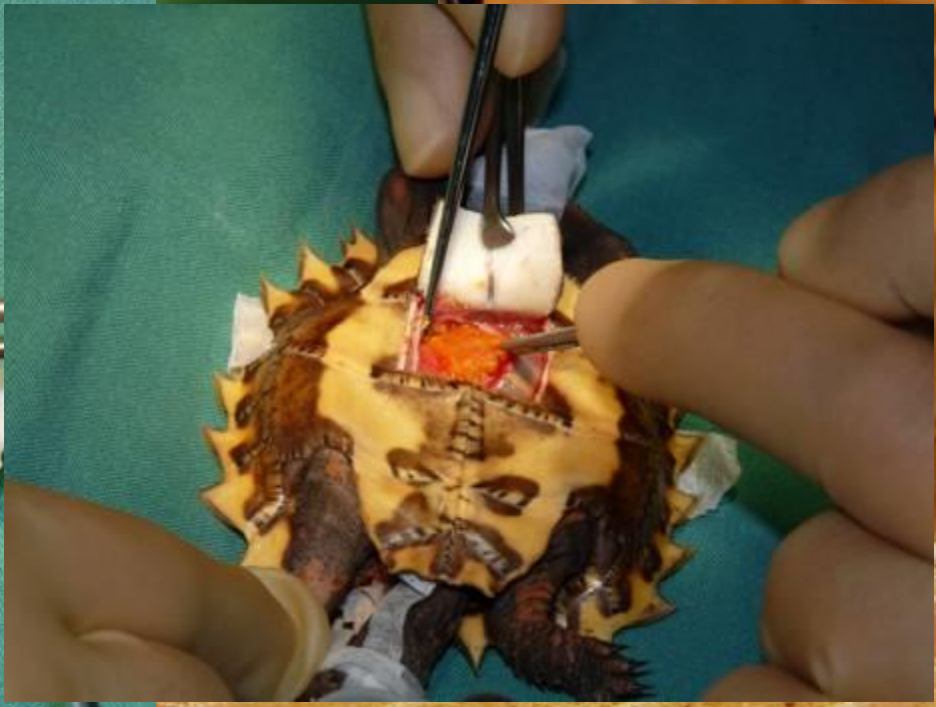
















	Durrell	Knoxville Zoo	Tennessee Aquarium
mean inc. temp.	25°C (24-26)	28°C	28°C
mean inc. period	137	110	104
mean hatch CL	63.2cm	~6cm	~5cm
mean hatch weight	35g	~35g	36g

humidity?

