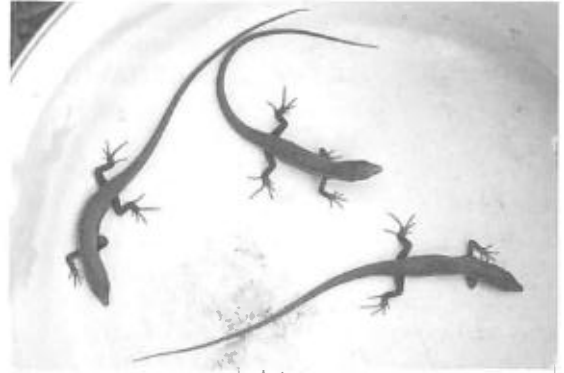


**TRACHYLEPIS SEHELLENSIS** (Seychelles skink): **REPRODUCTION.** *Trachylepis* (previously *Mabuya*) *sehellensis* is an abundant lizard species in the Seychelles. It is endemic and occurs on virtually all granitic islands, but it has also been introduced to several coral islands (Cheke, 1984; Gerlach, 2006). It is particularly common near human settlements, but quite rare

**Figure 1.** Three eggs of *Trachylepis sehellensis* found on the soil under a rock on the east coast of Mahé on 7<sup>th</sup> April 2006. © H. Bringsøe.



**Figure 2.** Three hatchlings of *Trachylepis sehellensis*, hatched and photographed on 10<sup>th</sup> April 2006. © H. Bringsøe.

in densely populated parts of the capital Victoria. Nevertheless, its biology, including reproduction, has been poorly studied.

During a visit to the Seychelles in 2006 a clutch of eggs of *T. sehellensis* was found at Anse Royale on the east coast of Mahé on 7<sup>th</sup>

**Figure 3.** Ventral surface of hatchling *Trachylepis sehellensis*. Notice the mark after the yolk sac. © H. Bringsøe.



April. The habitat was along the road side about 1 m from a private garden. The clutch consisted of three eggs which were situated in a slight cavity of approximately 3–6 mm on the soil under a rock (Figure 1). Their measurements were as follows: 23.2 x 16.9 mm, 23.6 x 16.7 mm, 23.7 x 17.5 mm.

The three eggs were kept temporarily in a small cloth bag. They hatched three days later, i.e. on 10<sup>th</sup> April 2006. The measurements of the hatchlings were: SVL 35 mm + tail 72 mm = total length 107 mm; SVL 36 mm + tail 74 mm = total length 110 mm; SVL 36 mm + tail 74 mm = total length 110 mm. They were released after they had been photographed (Figures 2–3).

*Trachylepis sechellensis* breeds throughout the year, August–October being the peak months (Brooke & Houston, 1983; Cheke, 1984). According to Brooke & Houston (1983) the clutch size of *T. sechellensis* consists of 4–6 eggs whereas Cheke (1984) mentions 2–4 eggs per clutch. It is impossible to say whether the clutch which I found, might have been bigger as it was laid.

However, no remains of egg shells were found under the rock and there was no obvious trace of predators. Most probably the eggs were considerably smaller as they were newly deposited. Hatchling size of *T. sechellensis* has so far not been documented and photographs of hatchlings have to my knowledge never been published.

#### REFERENCES

- Brooke, M. de L. & Houston, D. C. (1983). The biology and biomass of the skinks *Mabuya sechellensis* and *Mabuya wrightii* on Cousin Island, Seychelles (Reptilia: Scincidae). *J. Zool. London* **200**, 179–195.
- Cheke, A. S. (1984). Lizards of the Seychelles. In: *Biogeography and ecology of the Seychelles Islands*. pp. 331–360. Stoddart, D.R. (Ed.). The Hague: Dr. W. Junk Publ.
- Gerlach, J. (2006). *The Vertebrates of Seychelles - a Field Guide*. Privately published. 79 pp.

Submitted by HENRIK BRINGSØE. *Irisvej 8, DK-4600 Køge, Denmark.* bringsoe@email.dk