

The distribution of amphibians in the Matese Massif of southern Italy

LINO CIRUCCI, LORENZO DE LISIO, MARCO CARAFA, ANGELA PELOSI, GIOVANNI CAPOBIANCO,
PASQUALE BUONPANE & MASSIMO CAPULA

Table S1. Municipalities and number of localities in the Matese Massif from which data were collected

Municipalities	Province	Number of localities
Ailano	Caserta (Campania)	5
Bojano	Campobasso (Molise)	1
Campochiaro	Campobasso (Molise)	12
Capriati al Volturno	Caserta (Campania)	10
Castello del Matese	Caserta (Campania)	29
Castelpetroso	Isernia (Molise)	19
CerretoSannita	Benevento (Campania)	9
Cusano Mutri	Benevento (Campania)	25
Fontegreca	Caserta (Campania)	1
Gallo Matese	Caserta (Campania)	8
GioiaSannitica	Caserta (Campania)	2
Guardiaregia	Campobasso (Molise)	190
Letino	Caserta (Campania)	8
Morcone	Benevento (Campania)	3
PiedimonteMatese	Caserta (Campania)	12
Pietraroja	Benevento (Campania)	25
Pontelandolfo	Benevento (Campania)	2
PrataSannita	Caserta (Campania)	1
Raviscanina	Caserta (Campania)	1
Roccamandolfi	Isernia (Molise)	40
San Gregorio Matese	Caserta (Campania)	19
San Polo Matese	Campobasso (Molise)	10
Sant'Angelo D'Alife	Caserta (Campania)	2
Sepino	Campobasso (Molise)	70
Valle Agricola	Caserta (Campania)	1
Venafro	Isernia (Molise)	1

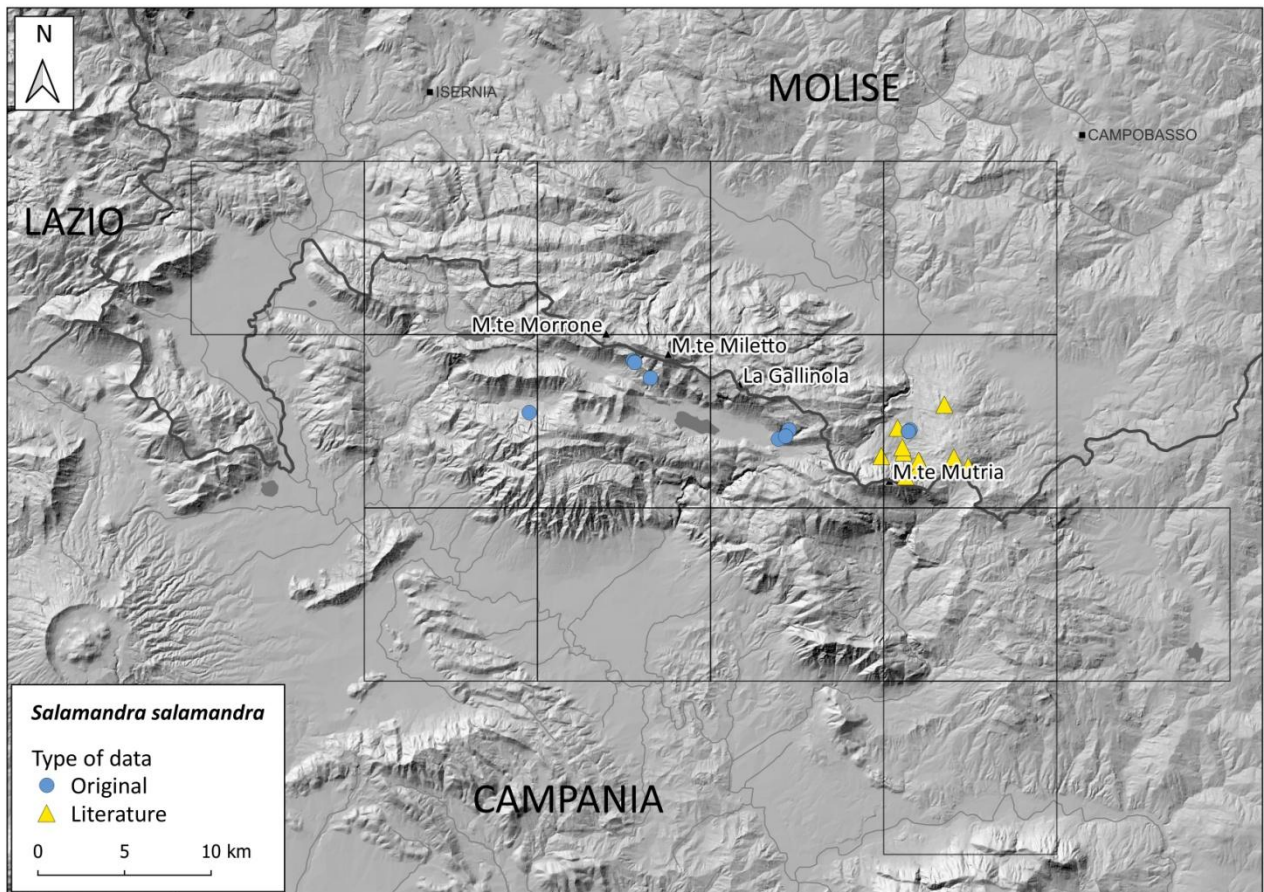


Figure S1. Distribution map of *Salamandra salamandra*

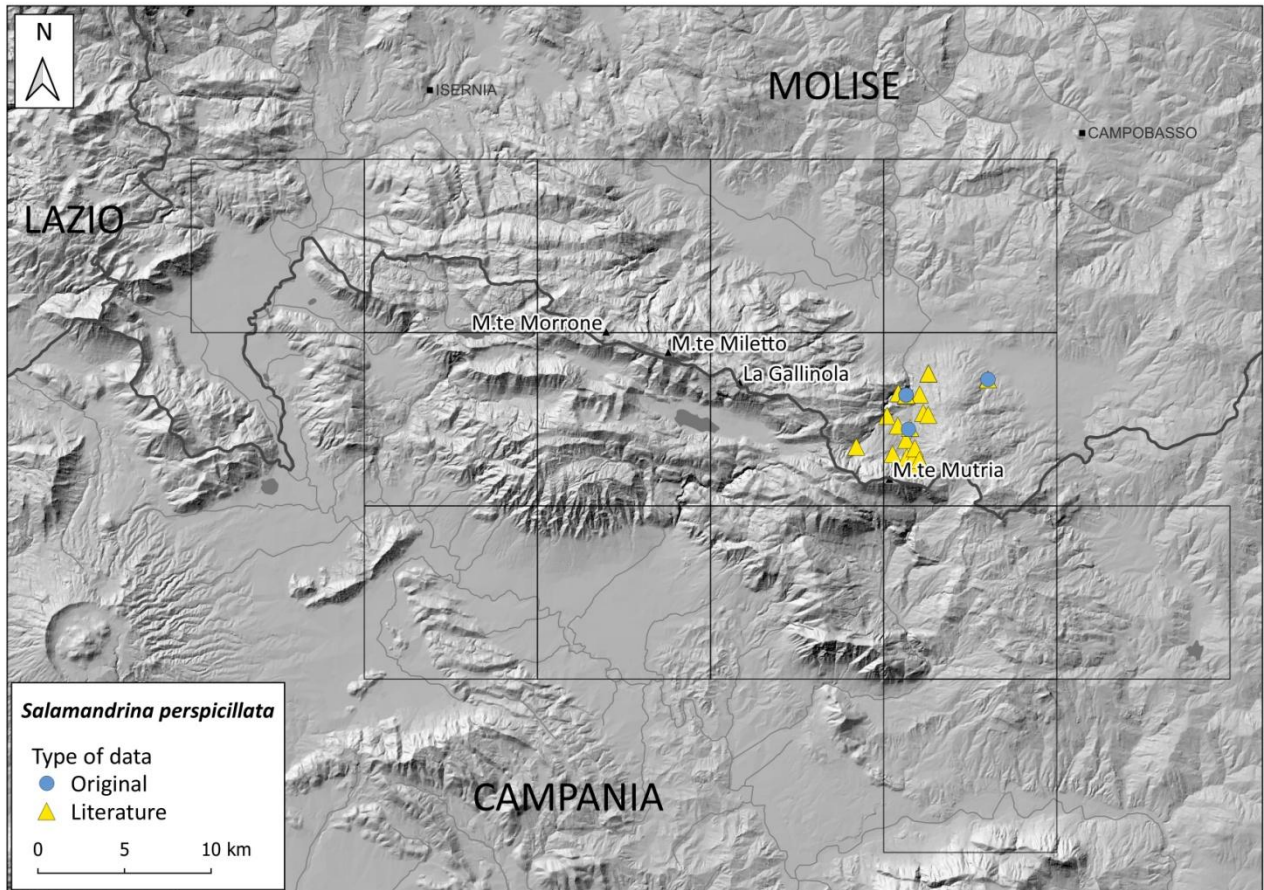


Figure S2. Distribution map of *Salamandrina perspicillata*

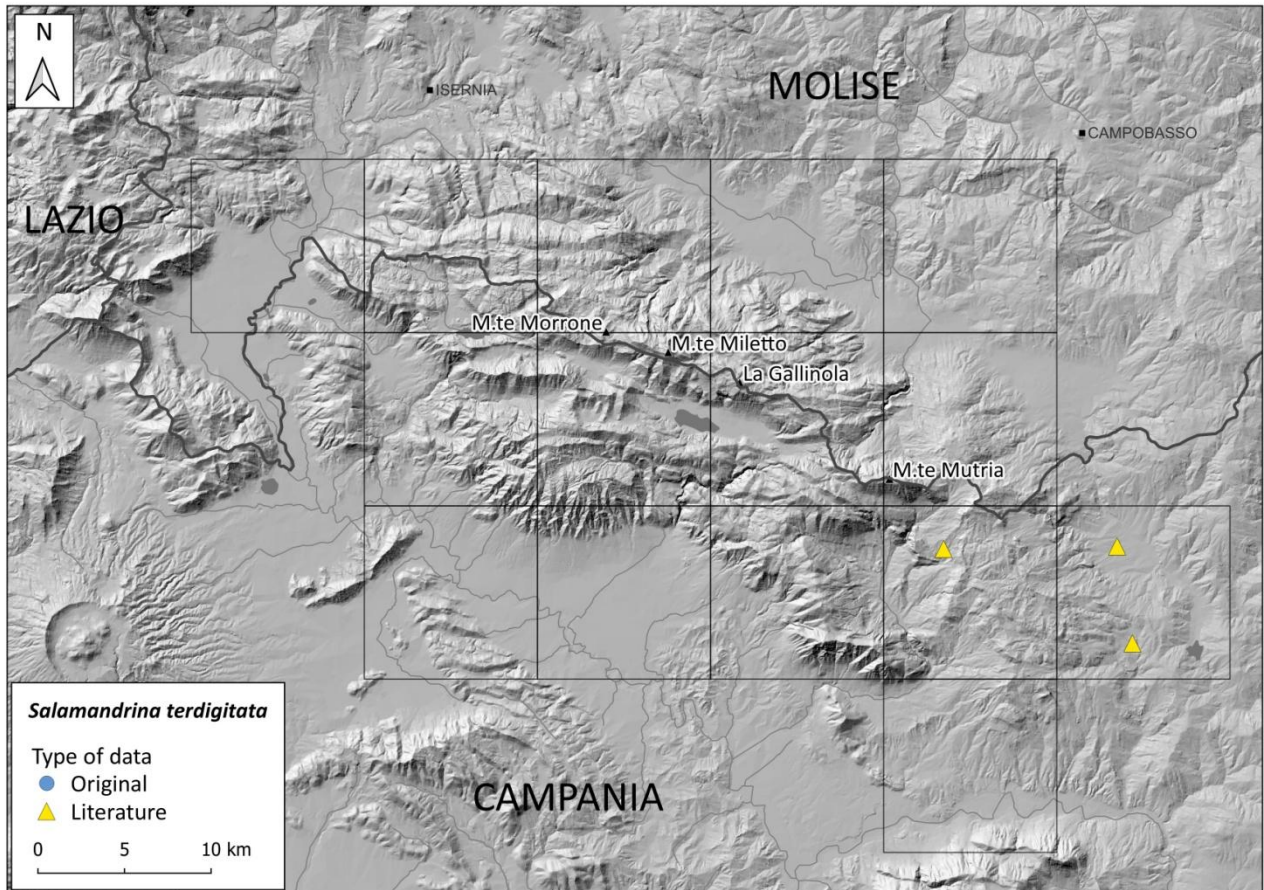


Figure S3. Distribution map of *Salamandrina terdigitata*

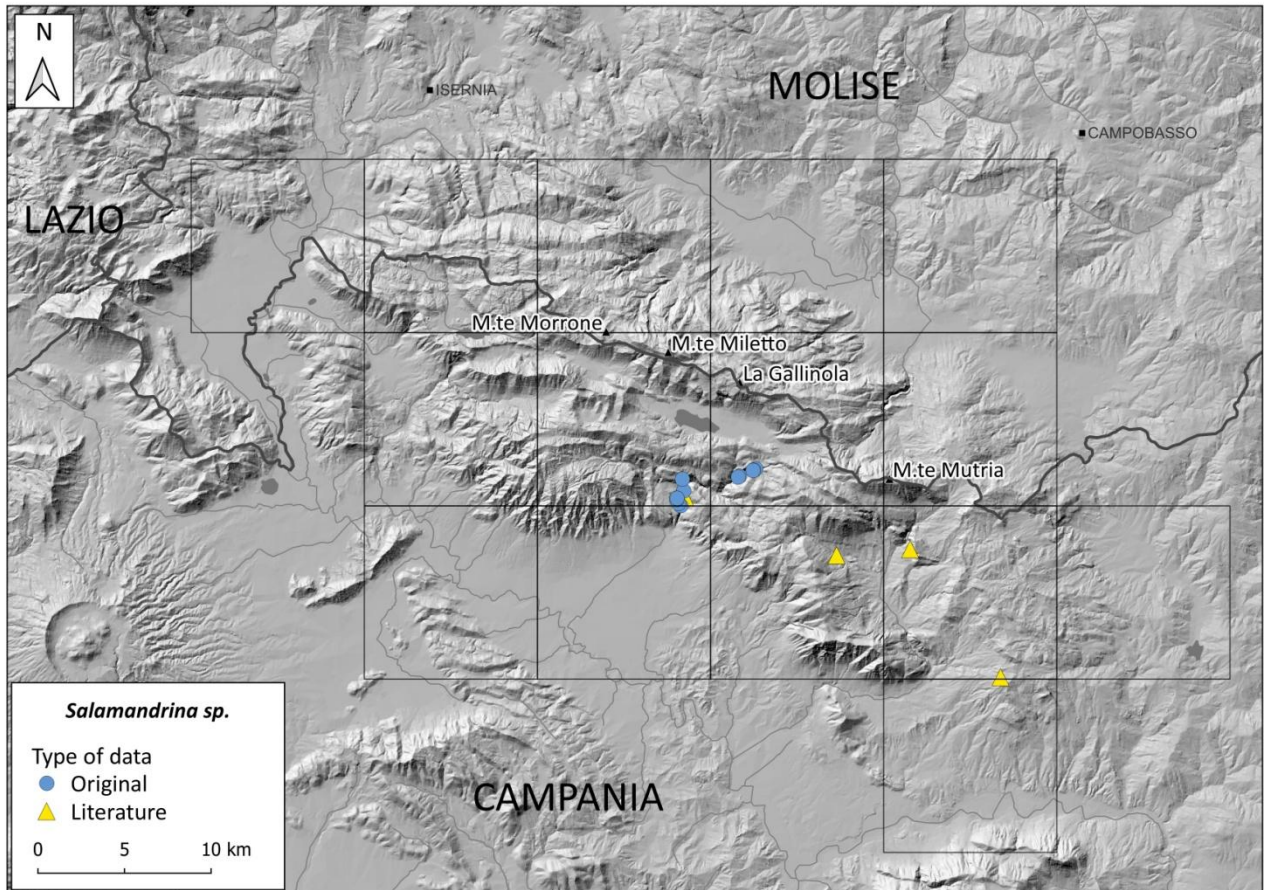


Figure S4. Distribution map of *Salamandrina sp.*

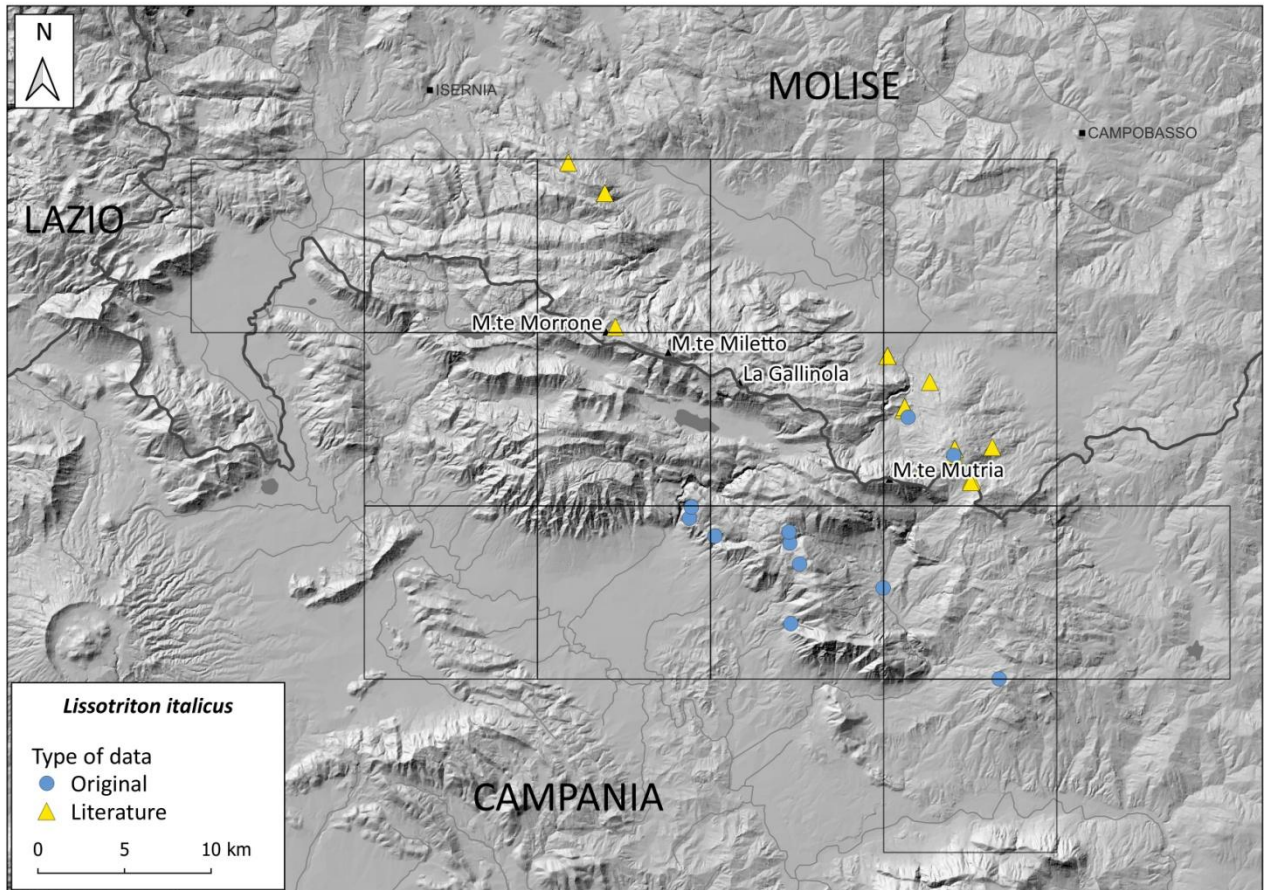


Figure S5. Distribution map of *Lissotriton italicus*

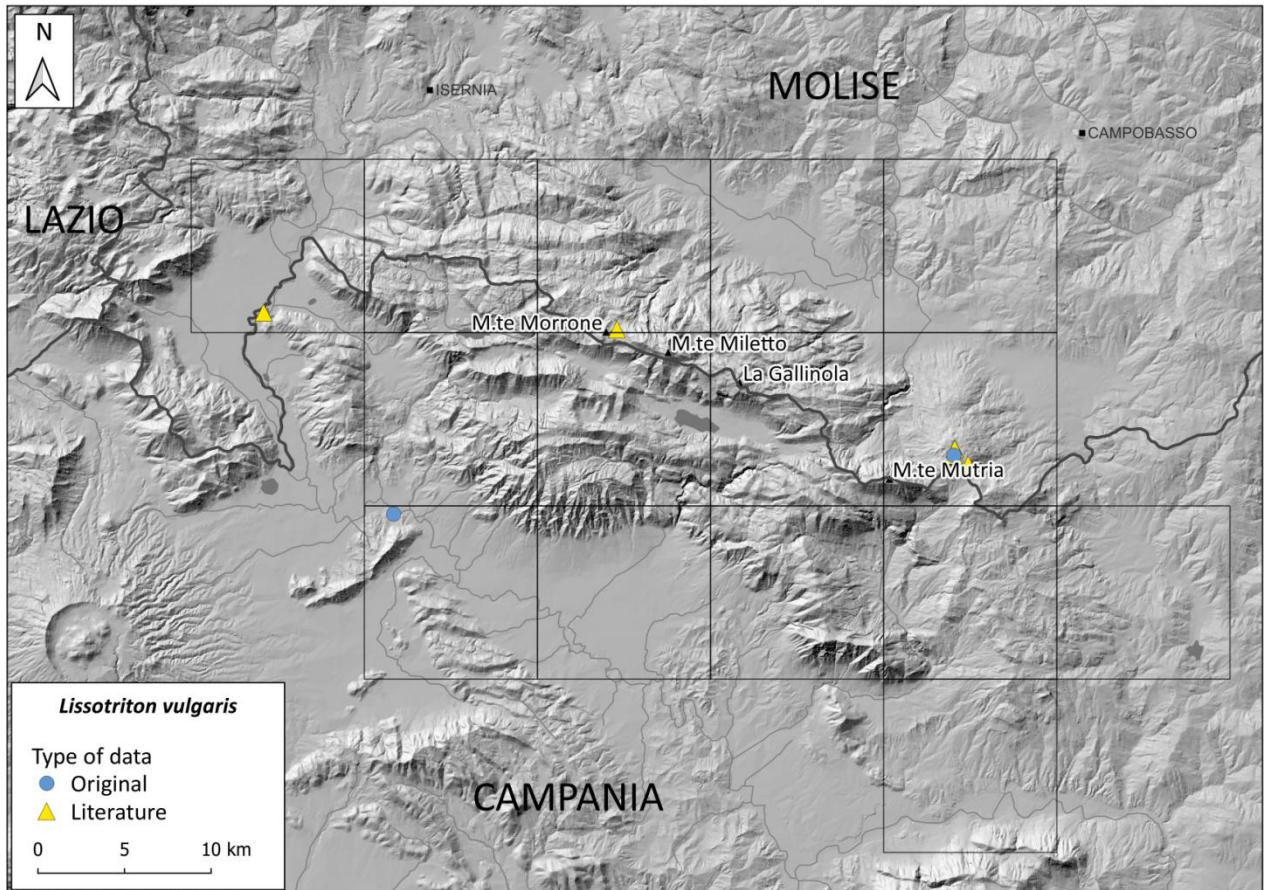


Figure S6. Distribution map of *Lissotriton vulgaris*

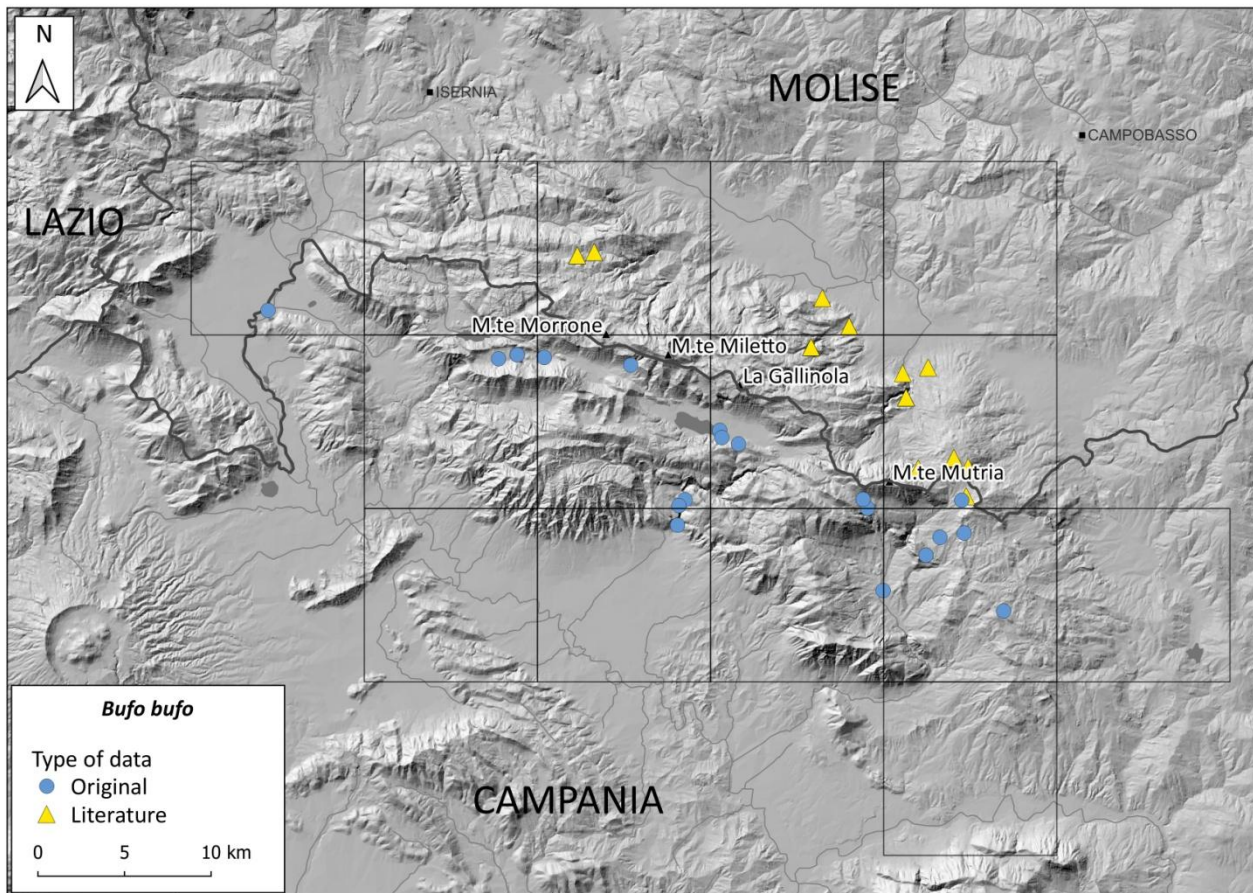


Figure S9. Distribution map of *Bufo bufo*

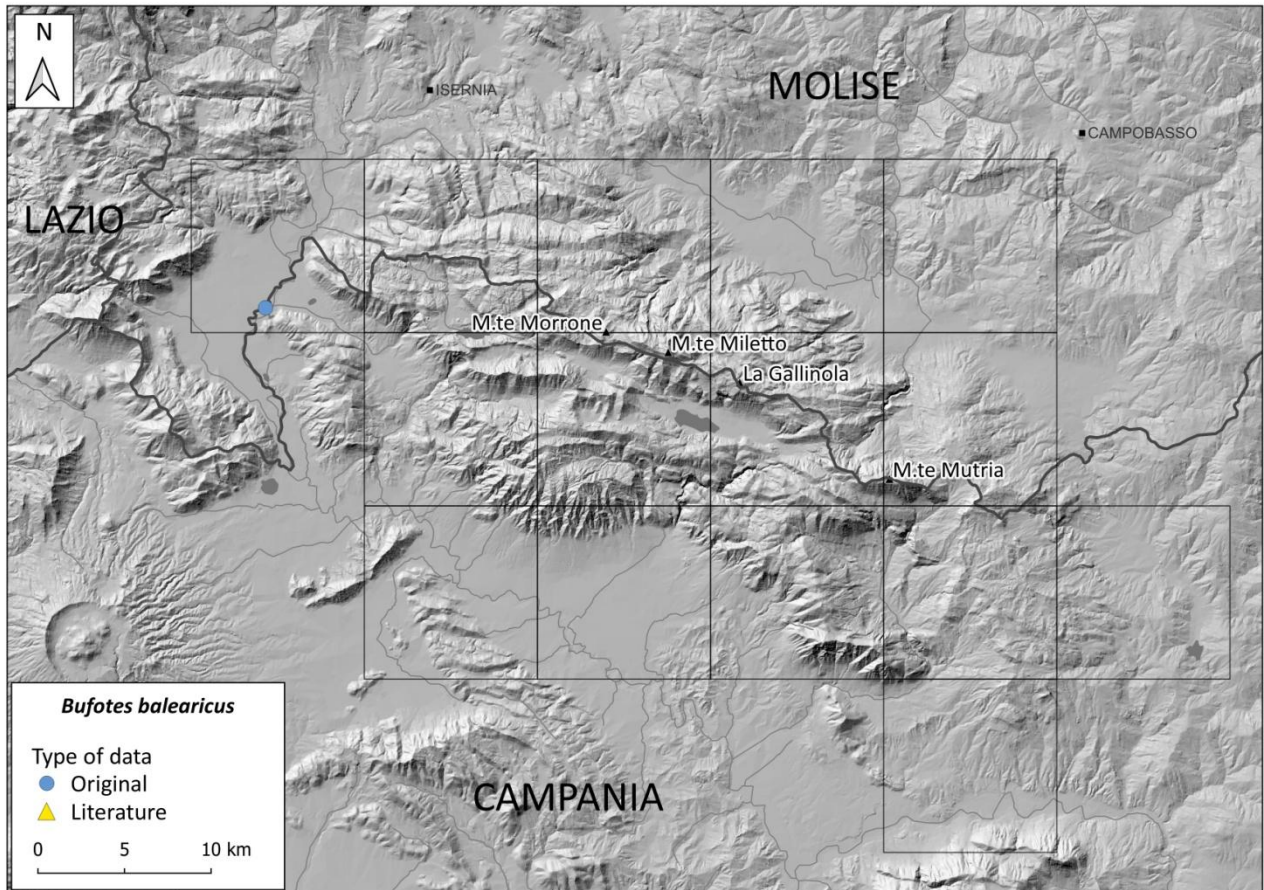


Figure S10. Distribution map of *Bufotes balearicus*

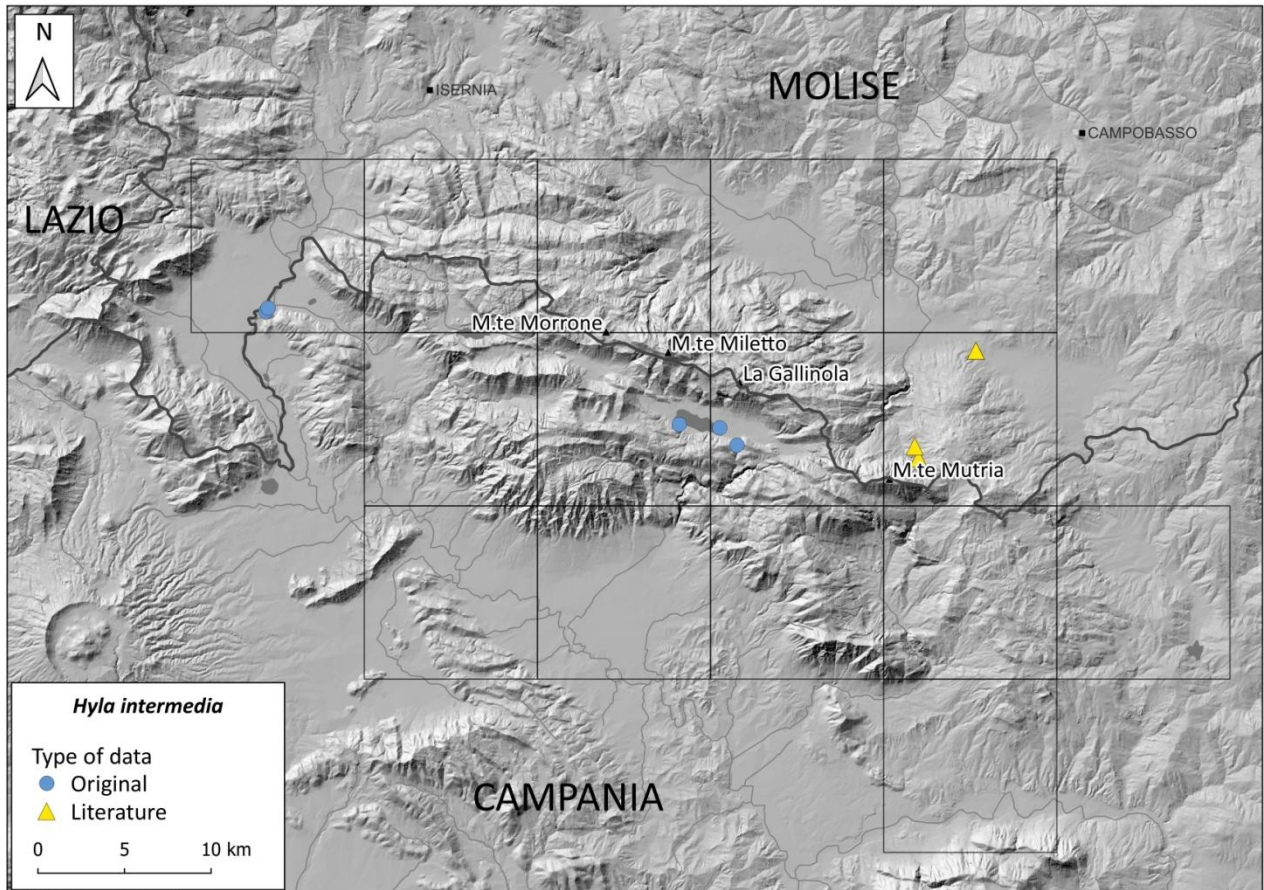


Figure S11. Distribution map of *Hyla intermedia*

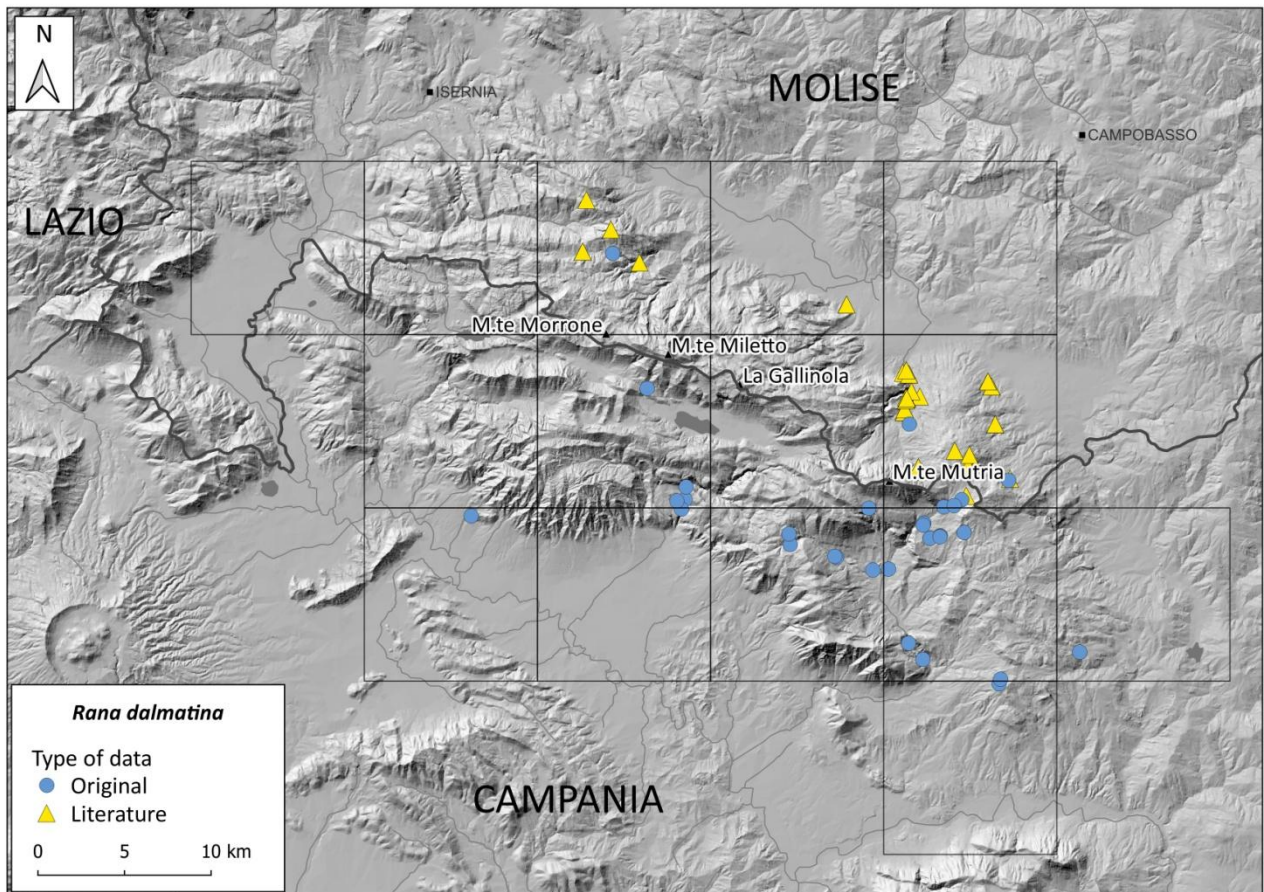


Figure S12. Distribution map of *Rana dalmatina*

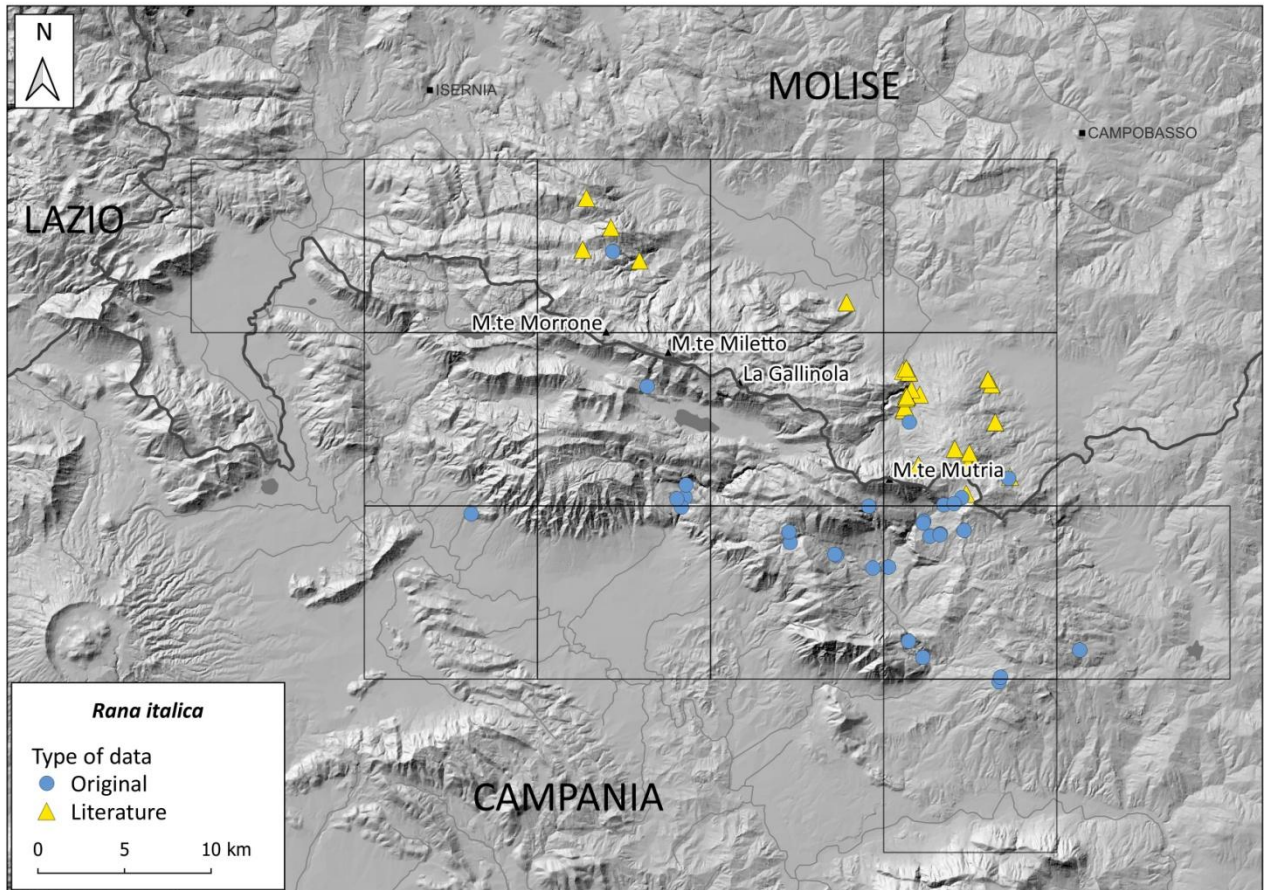


Figure S13. Distribution map of *Rana italica*

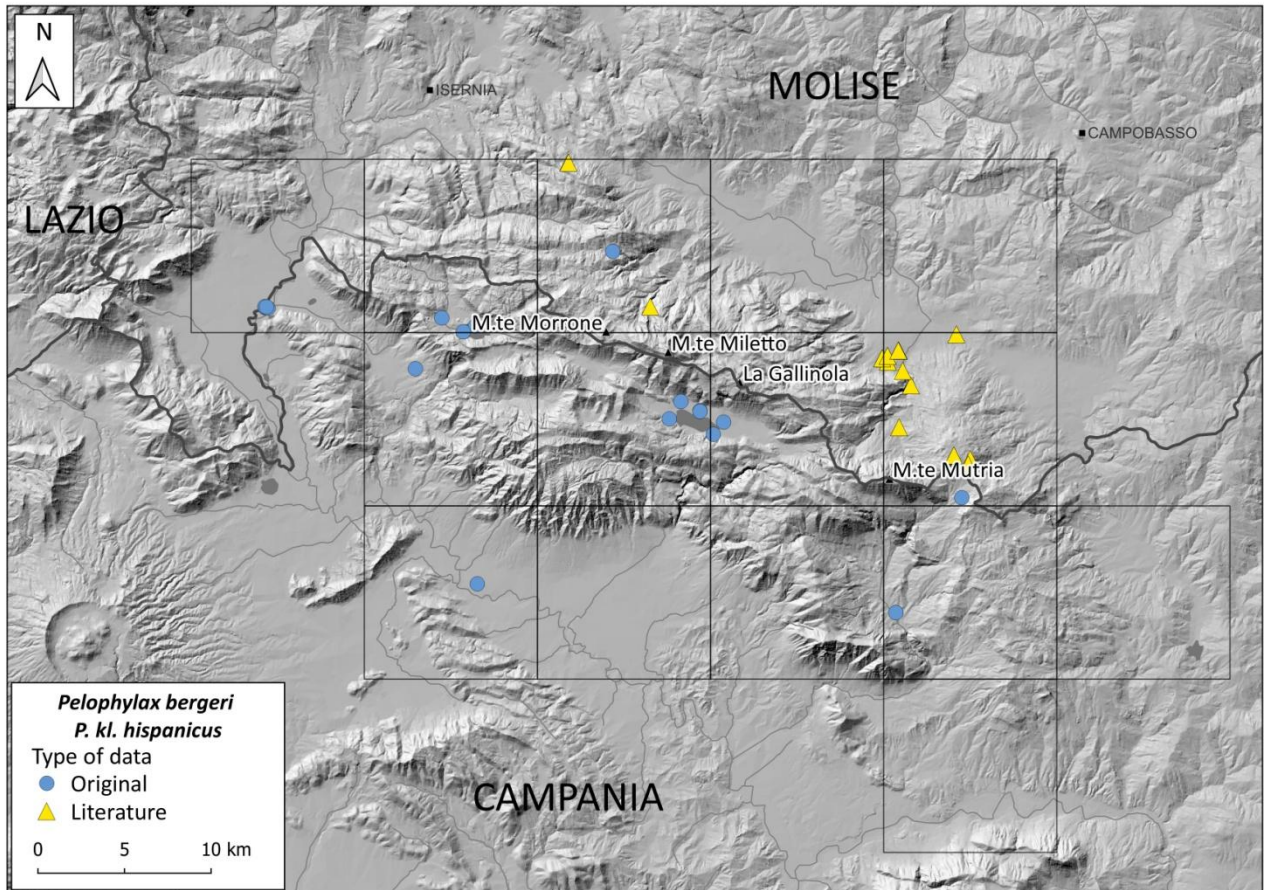


Figure S14. Distribution map of *Pelophylax bergeri* / *P. kl. hispanicus*