

**Sexual dimorphism and interspecific head variation in the *Liolaemus melanops* complex  
(Squamata: Liolaemini) based on geometric morphometrics**

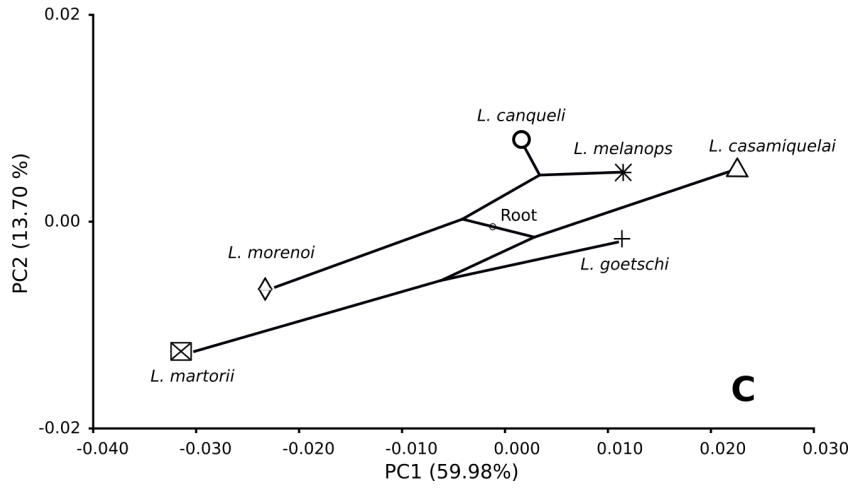
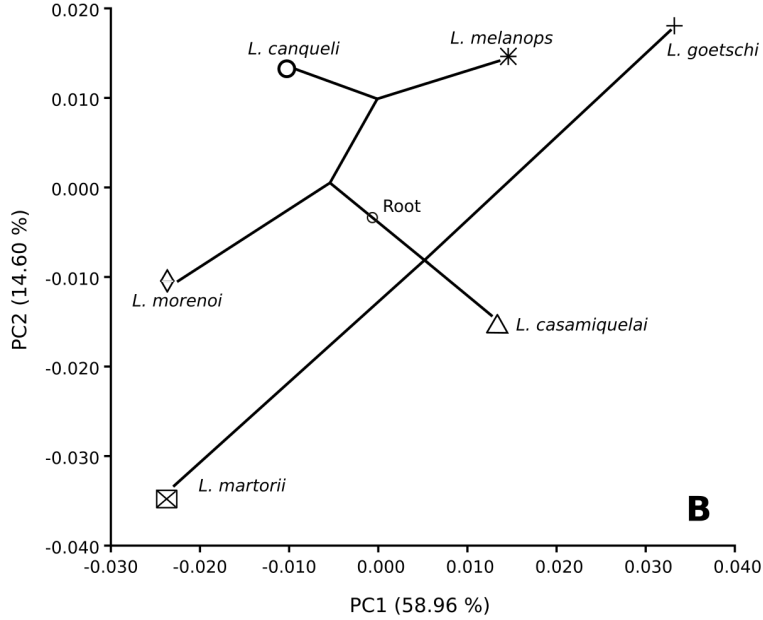
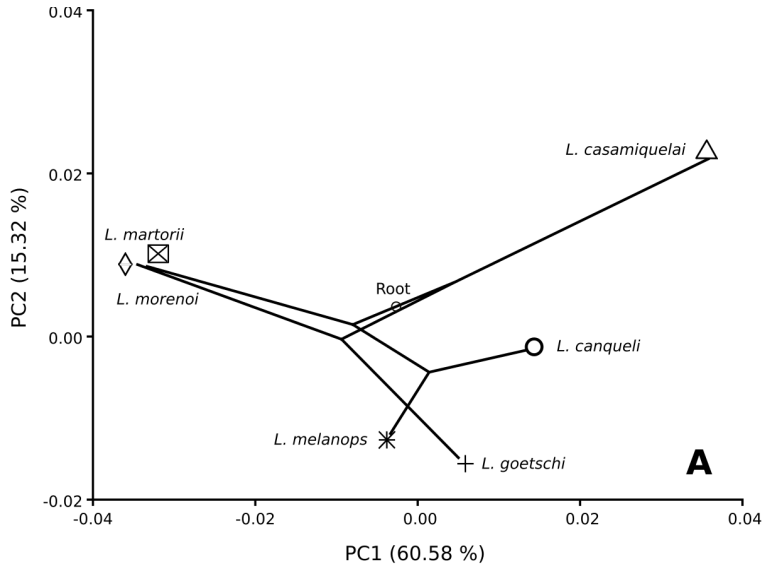
by  
Ignacio Minoli, Mariana Morando & Luciano Javier Avila

**Appendix 1.** Specimens examined with voucher numbers, species name, province and geographical coordinates used in this study. All individuals are catalogued in the Centro Nacional Patagónico Herpetological collection (LJAMM-CNP), Puerto Madryn, Chubut, Argentina.

Specimen	Species	Province	Latitude	Longitude
LJAMM-CNP 12365, 12371, 12372, 12373, 12374, 12375, 12376, 12377, 12378	<i>Liolaemus canqueli</i>	Chubut	43°55'50.6"S	68°55'57"W
LJAMM-CNP 12357, 12358, 12359	<i>Liolaemus canqueli</i>	Chubut	43°53'29.8"S	68°58'28.8"W
LJAMM-CNP 12360, 12361	<i>Liolaemus canqueli</i>	Chubut	43°53'29.8"S	68°58'28.8"W
LJAMM-CNP 9106, 9107, 9108, 9102, 9103, 9104, 9105	<i>Liolaemus canqueli</i>	Chubut	43°60'40.3"S	69°09'00.5"W
LJAMM-CNP 8665, 8666	<i>Liolaemus casamiquelai</i>	Río Negro	41°04'01.4"S	68°23'53.6"W
LJAMM-CNP 8667, 8668, 8669, 8670, 8671, 8672, 8675, 8676	<i>Liolaemus casamiquelai</i>	Río Negro	41°04'01.4"S	68°23'53.6"W
LJAMM-CNP 2977, 2979, 2980, 2986, 4878	<i>Liolaemus casamiquelai</i>	Río Negro	41°10'01.2"S	68°30'23"W
LJAMM-CNP 11207, 11208, 11209, 11210, 11211, 11212, 11213, 11214, 11215, 11216, 11217, 11218, 11342, 11343	<i>Liolaemus dumerili</i>	Río Negro	40°36'49.5"S	67°45'38.1"W
LJAMM-CNP 5199, 5200, 5201	<i>Liolaemus goetschi</i>	Río Negro	38°42'23.61"S	67°32'12.14"W
LJAMM-CNP 8235, 13714, 13715, 13764, 13765, 13766, 13767, 13768, 13769, 13770, 13771, 13772, 13773, 13775, 13776, 13777	<i>Liolaemus goetschi</i>	Río Negro	38°50'60"S	67°35'59.9"W
LJAMM-CNP 4567, 4568, 4570	<i>Liolaemus martorii</i>	Río Negro	40°49'25.3"S	65°07'35.5"W
LJAMM-CNP 11724, 11725	<i>Liolaemus martorii</i>	Río Negro	40°50'40.6"S	65°07'35.5"W
LJAMM-CNP 2560, 2561, 2562, 2563, 2564, 2565, 2566, 2567, 2568, 2570, 2571, 2669, 2670	<i>Liolaemus martorii</i>	Río Negro	40°50'26"S	65°07'04"W

Specimen	Species	Province	Latitude	Longitude
LJAMM-CNP 13216, 13217, 13550, 13551, 13552, 13553, 13554, 13555, 13556, 13557, 13559, 13560, 13561, 13562, 13567, 13568, 14141	<i>Liolaemus melanops</i>	Chubut	38°50'60"S	66°20'00.9"W
LJAMM-CNP 2934, 2939, 2940, 2941	<i>Liolaemus melanops</i>	Chubut	42°14'38.8"S	66°22'41.6"W
LJAMM-CNP 14267, 14268, 14269, 14270, 14271, 14272, 14273	<i>Liolaemus morenoi</i>	Neuquén	40°16'10.4"S	70°38'04"W
LJAMM-CNP 11246, 11247, 11391, 11392	<i>Liolaemus morenoi</i>	Neuquén	40°17'05.2"S	70°38'16.9"W
LJAMM-CNP 6477, 6478	<i>Liolaemus morenoi</i>	Neuquén	40°17'05.6"S	70°38'17"W





( % ' , ! " \$ % \$ % \$ ,