

Rafael Hernández-Guzmán, Luis H. Escalera-Vázquez & Ileri Suazo-Ortuño

Predicting *Ambystoma ordinarium* distribution under different climate scenarios in central Mexico

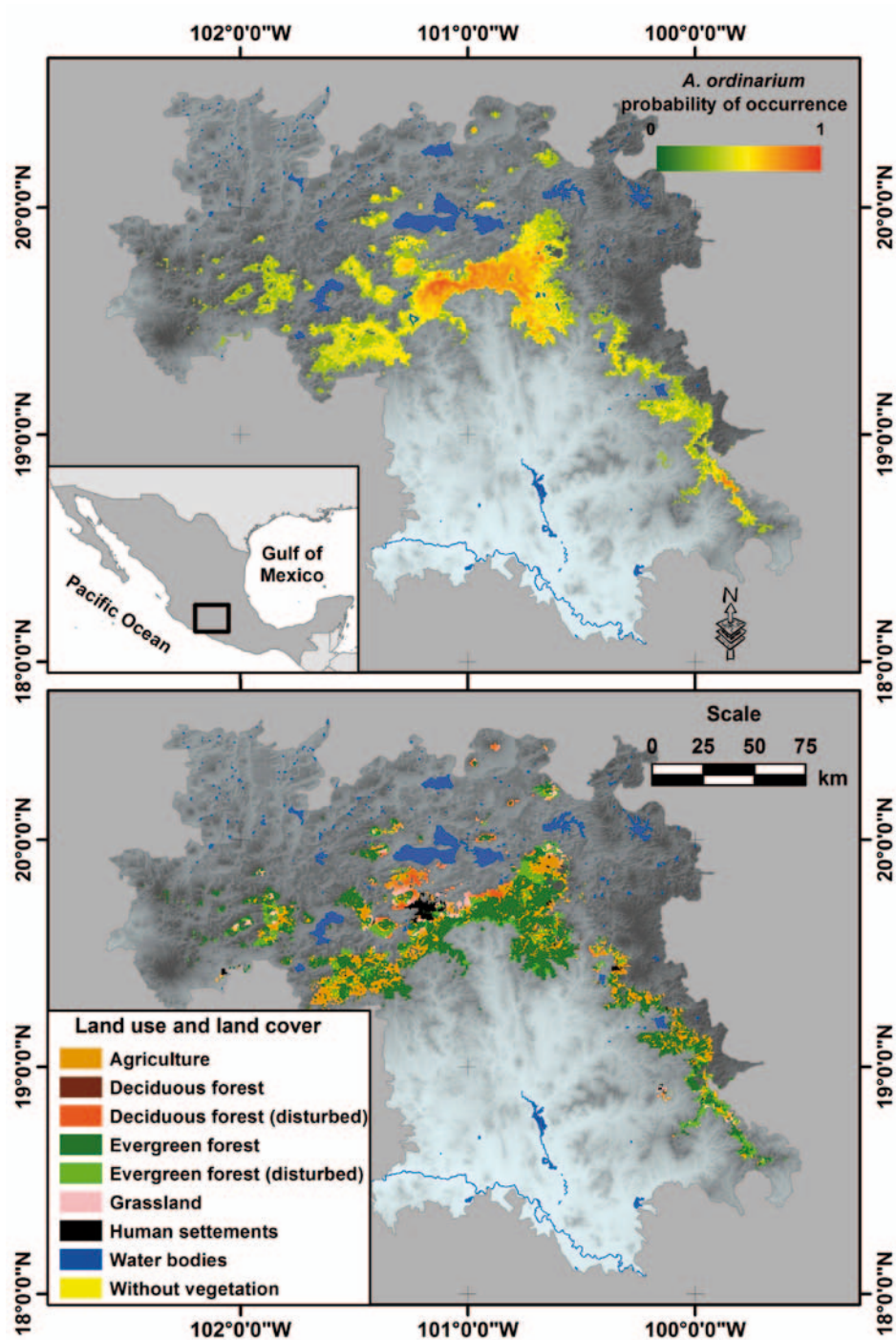


Figure S1. Maps of the study area within Central Mexico representing the potential distribution model of *A. ordinarium* (upper) and the main land use and land cover within the predicted area (Series VI; scale 1:250,000; edition 2017) (lower)