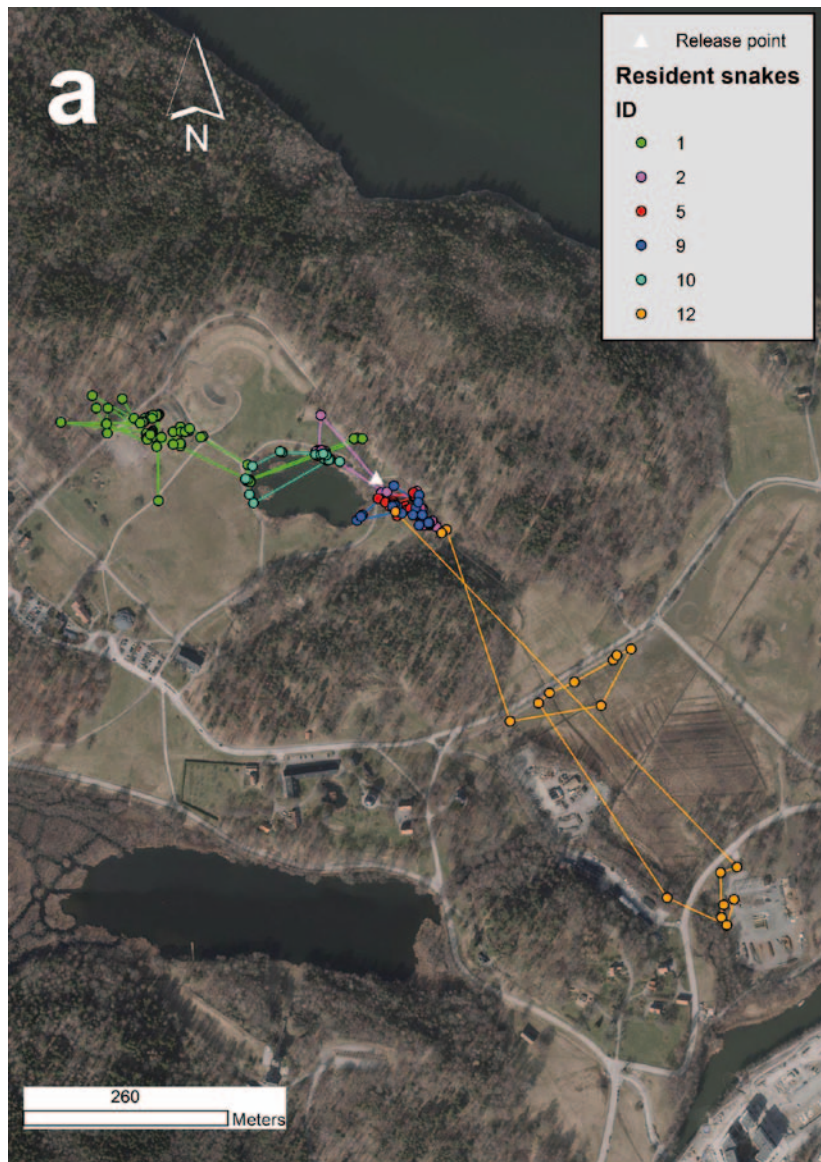


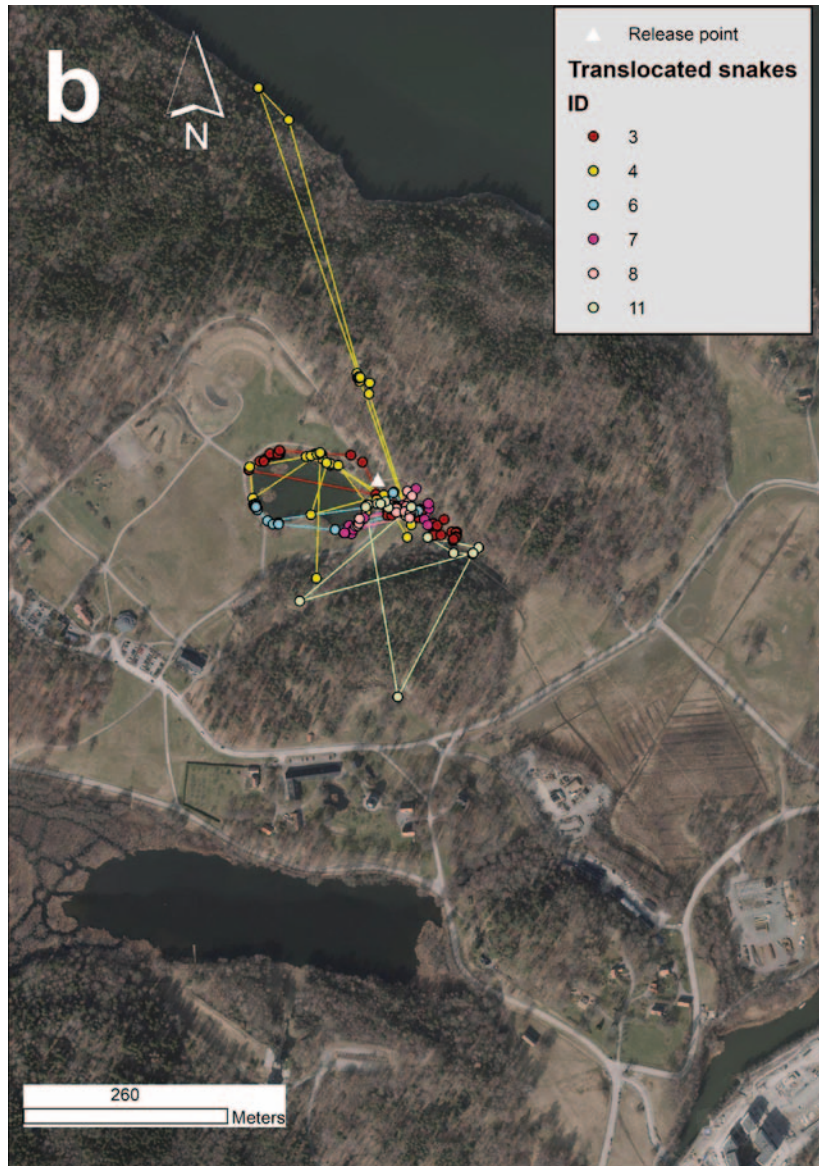


Published by the British Herpetological Society

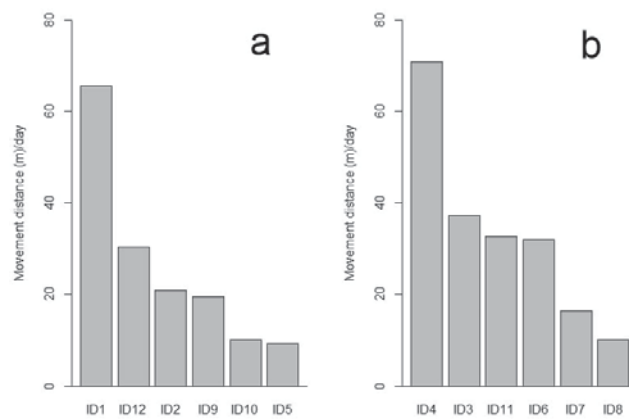
Johan ElMBERG, Mattias Hagman, Kristin Löwenborg, Gustav Pettersson, Anais Voisin & Simon KärVemo

**Movements and habitat choice of resident and translocated adult female Grass Snakes (*Natrix natrix*) during the egg-laying period**





**Figure S1.** Positions of (a) resident and (b) translocated grass snakes. Different colours represent different individuals ('Ind' in Table 1) for each figure. The white triangle indicates the place where all snakes were released.



**Figure S2.** Daily movements (maximum distance moved/tracked period) for 12 female grass snakes; (a) resident and (b) translocated individuals.