

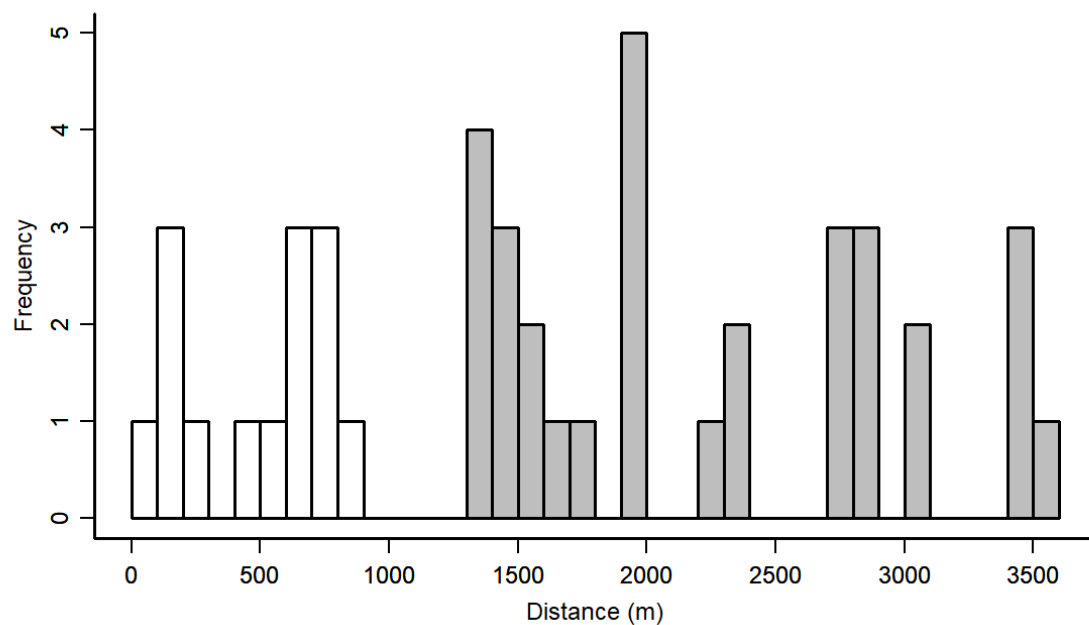
## Genetic differentiation over a small spatial scale in the smooth newt (*Lissotriton vulgaris*)

**Table S1.** Coordinates of ponds, number of animals sampled and average pond distances (measured as path lengths taking the variation in altitude between ponds also into account) within and between local regions in the study area.

Ponds	Latitude	Longitude	Number of animals sampled	Local regions	Within-region pond distance (mean $\pm$ SD)	Between-region pond distance (mean $\pm$ SD)
Szarvasszerú-megálló (P1)	47°43'46" N	19°00'24" E	11	'Upper' (U)	495.4 $\pm$ 332.0 m	U-M: 1638.8 $\pm$ 290.1 m; U-L: 2916.8 $\pm$ 429.9 m
Szarvasszerú-túlsó (P2)	47°43'48" N	19°00'32" E	10			
Felsőhosszúrételülső (P3)	47°43'36" N	19°00'58" E	8			
Felsőhosszúrétközépső (P4)	47°43'37" N	19°01'02" E	9			
Felsőhosszúréttúlsó (P5)	47°43'37" N	19°01'04" E	8			
Alsóhosszúréti tó (P6)	47°42'55" N	19°01'23" E	9	'Middle' (M)	285.6 m	M-U: 1638.8 $\pm$ 290.1 m; M-L: 1648 $\pm$ 228.4 m
János-tó (P7)	47°42'49" N	19°01'11" E	10			
Katlan (P8)	47°42'42" N	19°02'40" E	15	'Lower' (L)	576.0 $\pm$ 86.4 m	L-U: 2916.8 $\pm$ 429.9 m; L-M: 1648 $\pm$ 228.4 m
Ilona-tó (P9)	47°42'48" N	19°02'25" E	16			
Mélymocsár (P10)	47°42'27" N	19°02'24" E	11			

**Table S2.** Number of alleles (A), allelic richness (Ar), the observed ( $H_o$ ) and expected ( $H_e$ ) heterozygosity for each microsatellite locus within the 107 analysed samples. Allelic richness was calculated for each locus as the number of alleles divided by the number of samples without missing data at that locus. Values within parentheses are means with SD calculated across the 10 ponds.

Loci	A	Ar	$H_o$	$H_e$
Lm_749 (L1)	27 (12.8 ± 1.751)	0.252 (1.233 ± 0.195)	0.907 (0.899 ± 0.097)	0.936 (0.942 ± 0.020)
Tv4Ca9 (L2)	5 (4.2 ± 0.422)	0.047 (0.413 ± 0.099)	0.692 (0.692 ± 0.139)	0.730 (0.735 ± 0.046)
Lm_346 (L3)	8 (5 ± 0.943)	0.077 (0.522 ± 0.188)	0.748 (0.729 ± 0.191)	0.765 (0.766 ± 0.059)
Lm_AHNC3 (L4)	8 (4 ± 0.943)	0.075 (0.389 ± 0.111)	0.598 (0.588 ± 0.106)	0.622 (0.619 ± 0.068)
Lm_8BH (L5)	10 (5.6 ± 0.699)	0.093 (0.544 ± 0.105)	0.673 (0.671 ± 0.150)	0.737 (0.727 ± 0.094)
Tv5Ca13 (L6)	8 (5.2 ± 0.789)	0.075 (0.521 ± 0.156)	0.636 (0.632 ± 0.130)	0.787 (0.790 ± 0.045)



**Figure S1.** Distribution of between-pond distances in the study area. White bars indicate distances within local regions, grey bars denote distances between ponds that belong to different local regions.