

Phylogenetic position of *Tropidophorus assamensis* Annandale, 1912 with updated morphological data and distributional records

Hmar Tlawmte Lalremsanga, Ht Decemson, Mathipi Vabeiryureilai, Fanai Malsawmdawngliana,
Van Lalhlimpua & Lal Biakzuala

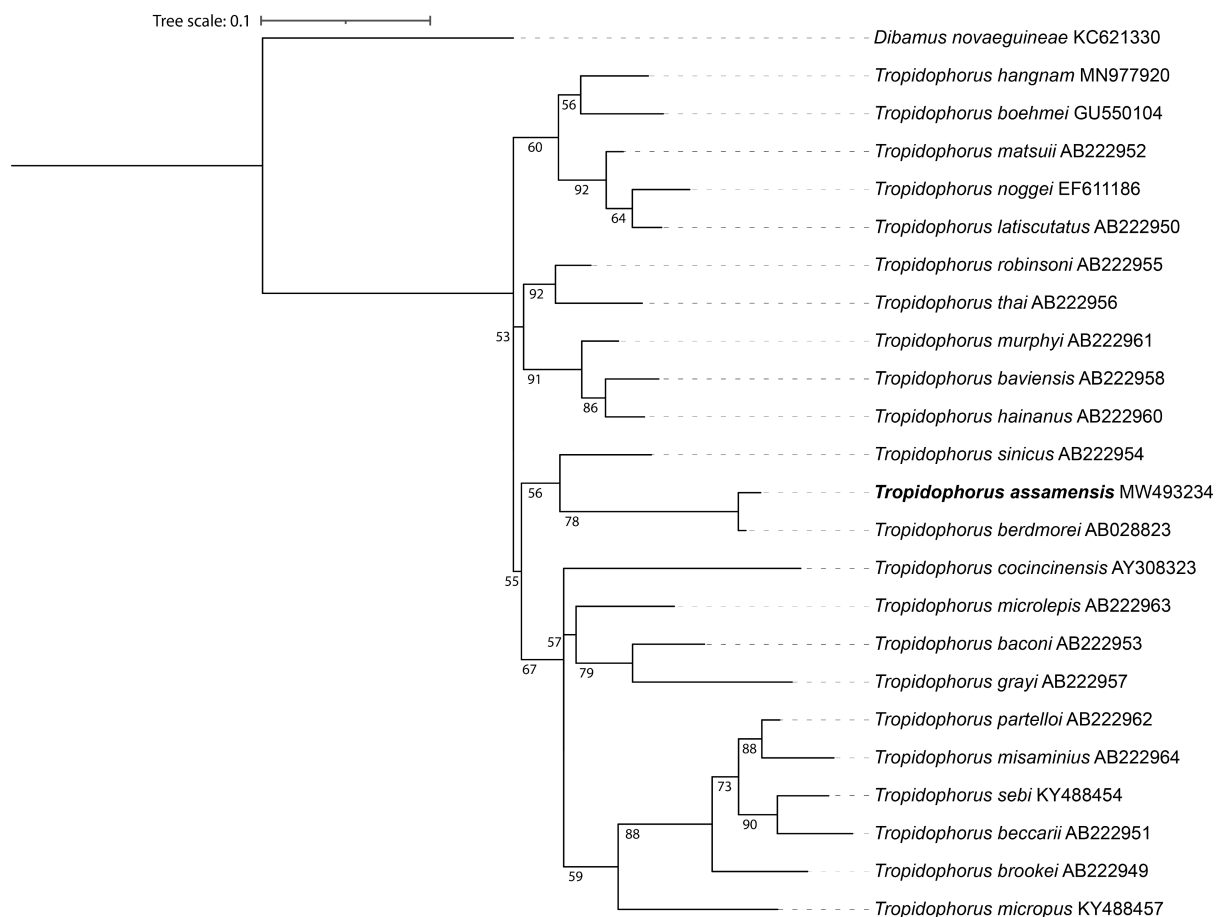


Figure S1. Maximum Likelihood phylogenetic tree of *Tropidophorus* species inferred using *16s rRNA* gene at 1000 bootstrap replicates. Sequence generated in this study is given in bold, and numbers at each node correspond to the bootstrap value.