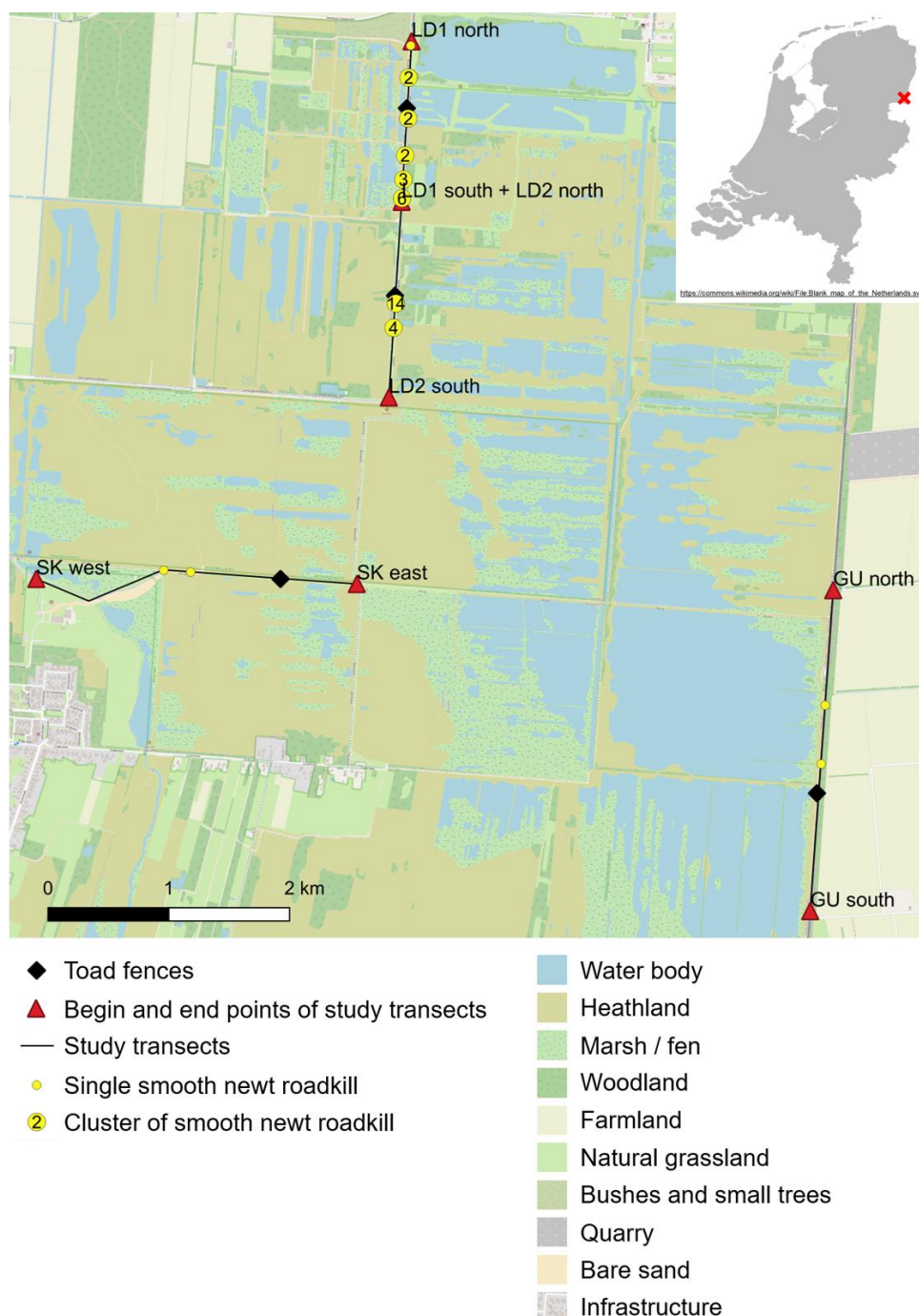


Extremely low amphibian roadkill probability on busy bicycle paths

Michaël A. Eijkelkamp, Mirjam J. Borger, Ruben Kluit & Jan Komdeur

Supplementary Figure 1. A map of Bargerveen Nature Reserve showing the location of the toad fences, the study transects on which we counted amphibian roadkill and the roadkill that we found (including the roadkill that we removed on the first day, 25 February 2021). One roadkill on transect LD1 and one on LD2 are not shown, because co-ordinates were not saved. All roadkill were smooth newts. Figure made with QGIS.



Supplementary Figure 2. Schematic overview of our toad fence set-up. The bicycle path is shown in yellow and the toad fences, with buckets, in black.

