

## Living on the EDGE: From the evolutionary uniqueness to the conservation status of the Colombian elapids and viperids

Yolima Moya-Bedoya, Daniela Cortés-Díaz, Andrés Felipe Grajales-Andic, Víctor M. Martínez-Arias, Juan Esteban Cáceres-Rave, Fernando Vargas-Salinas & Diana L. Buitrago-Torres

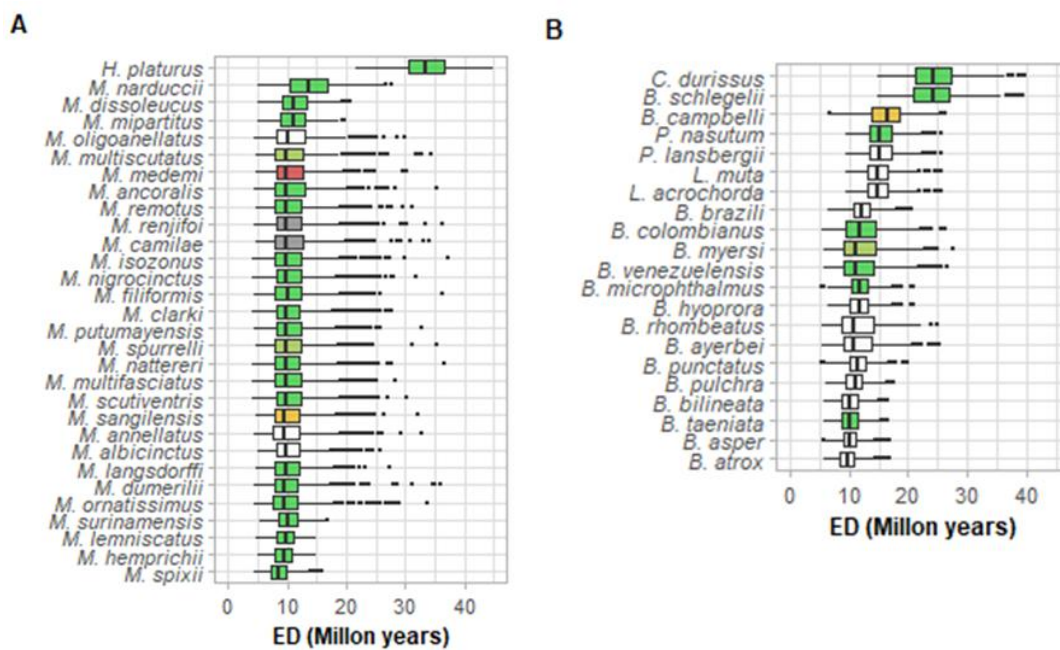


Figure S1. Boxplots of  $ED_{local}$  scores of Colombian elapids (A) and viperids (B) calculated over 10,000 phylogenetic trees.

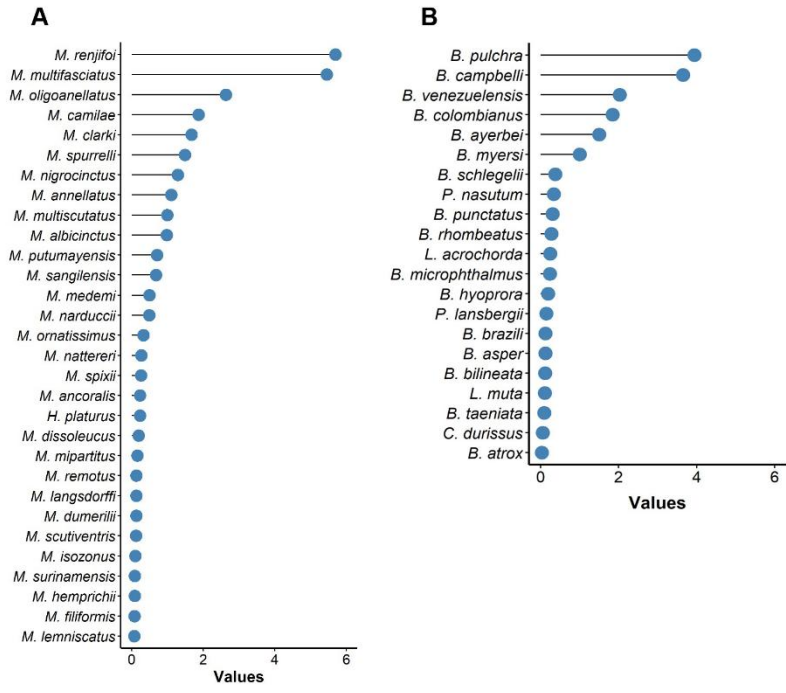
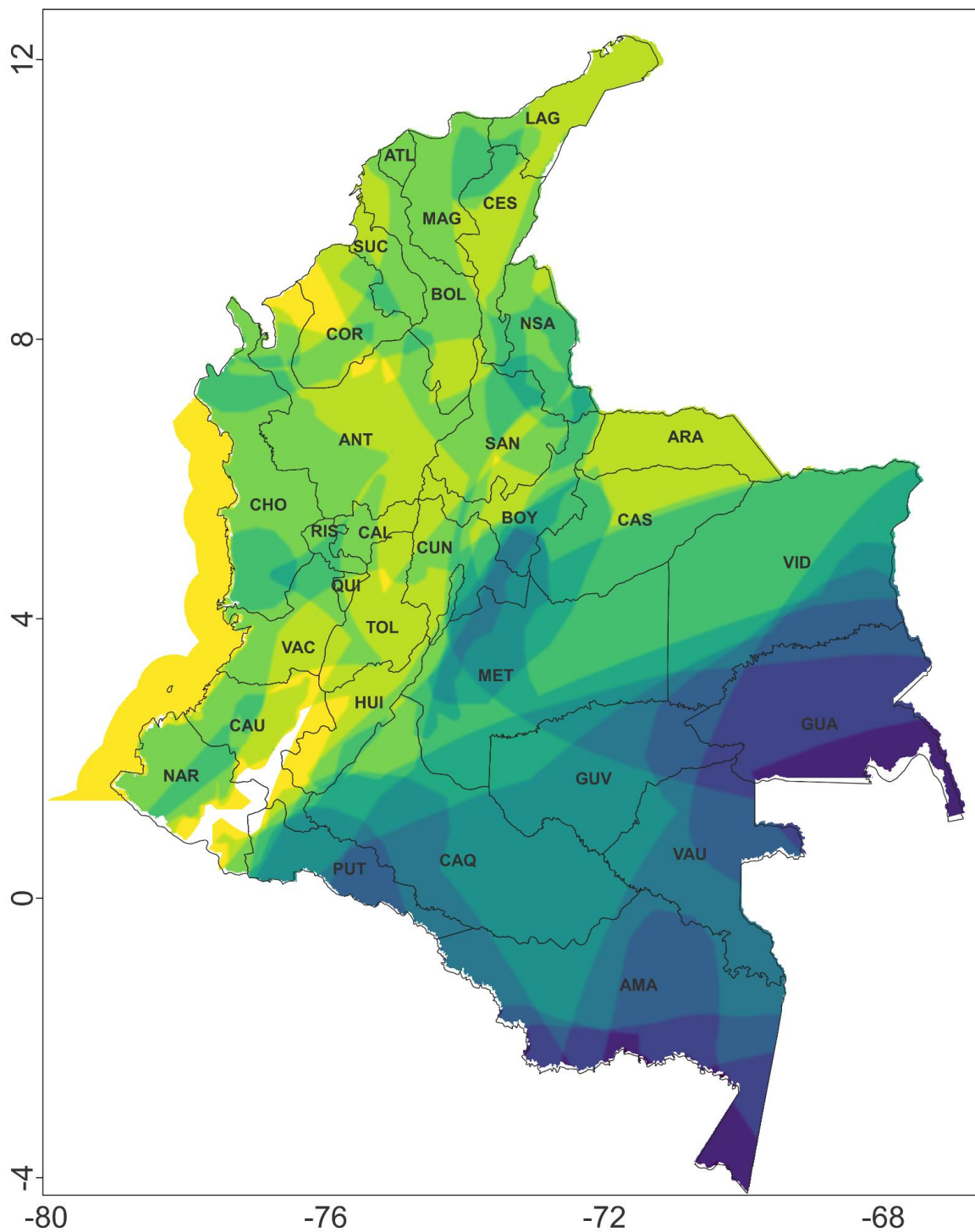
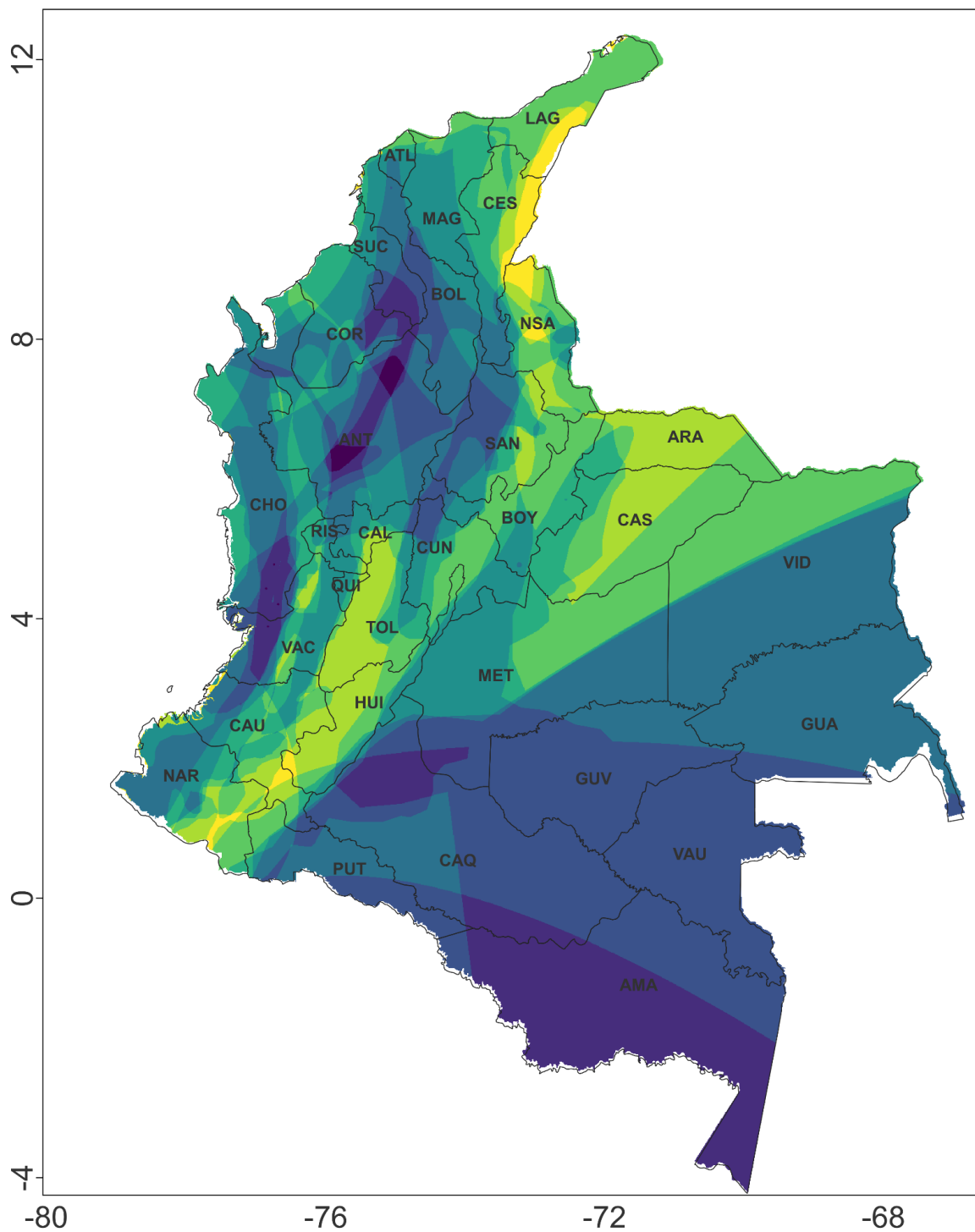


Figure S2. BED scores of Colombian elapids (A) and viperids (B).



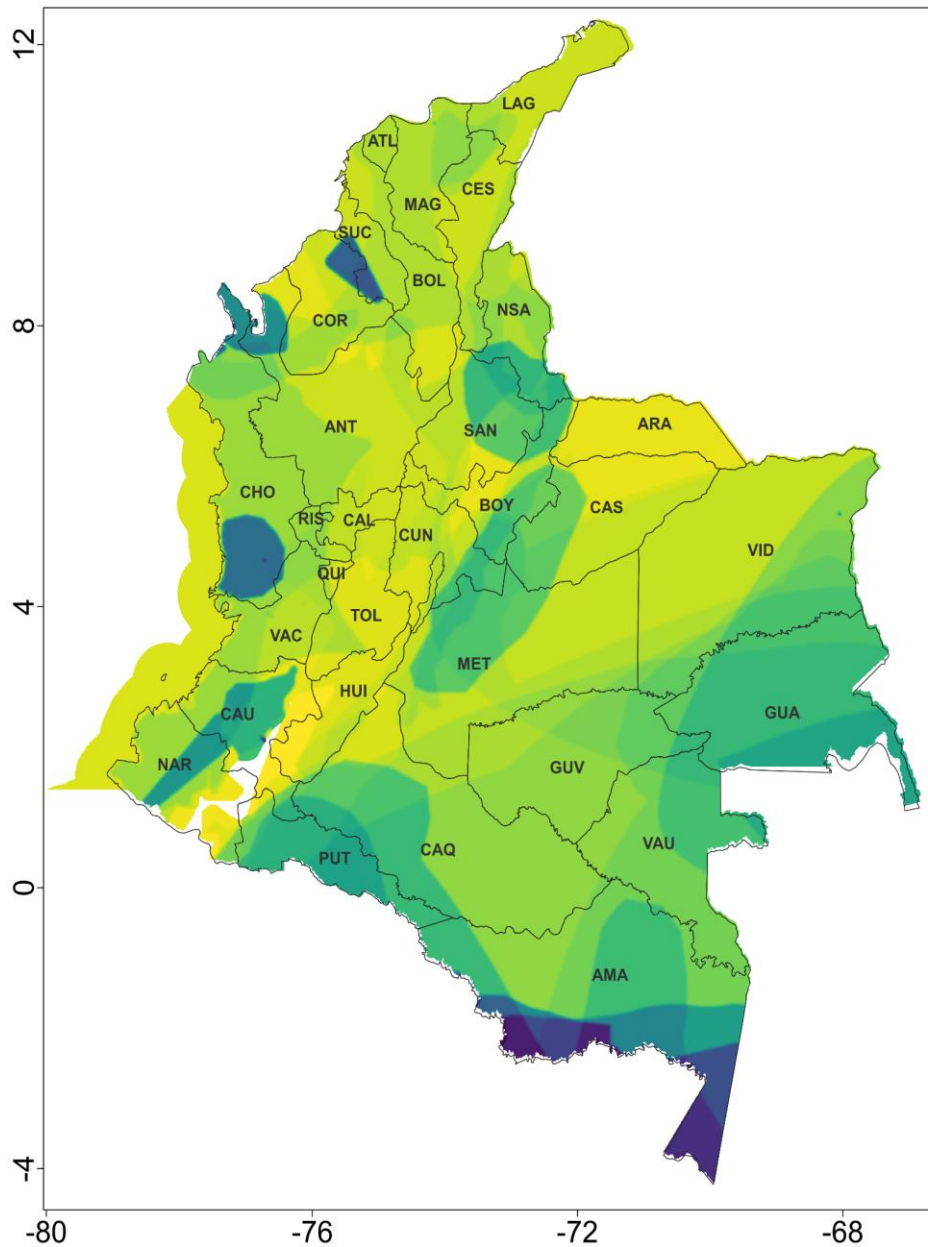
**Figure S3.** Spatial variation of species richness for snakes of the family Elapidae in Colombia. Note that maps include a sea species (*H. platurus*) in the Pacific Ocean. Political division at departmental level are displayed for more detail.

The richness of elapids is concentrated in the south and east of the Amazon region, specifically in the departments of Guania and Amazonas.



**Figure S4.** Spatial variation of species richness for snakes of the family Viperidae in Colombia. Political division at departmental level are displayed for more detail.

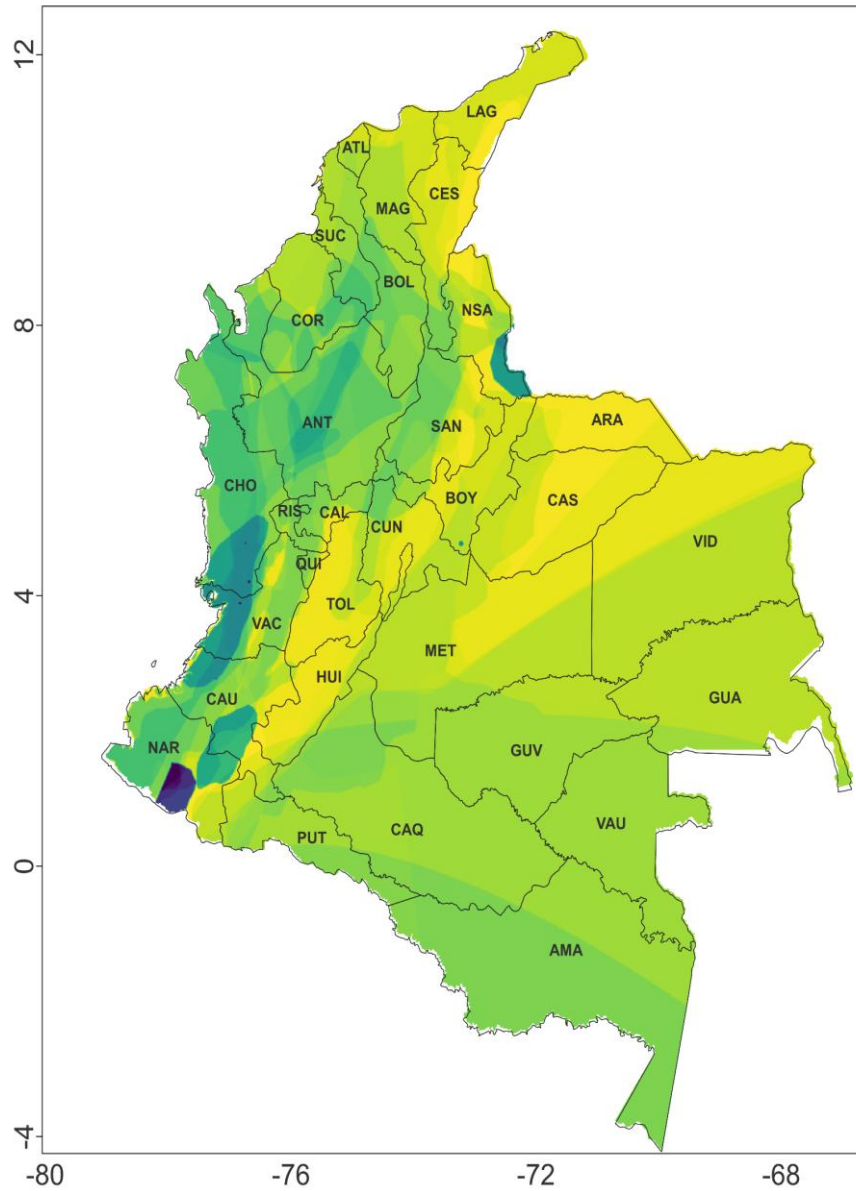
On the other hand, the richness of viperids is concentrated in several regions: in the Andean region, in the department of Antioquia, in the Amazon region, in the departments of Amazonas and Caquetá, in the Caribbean region, in the departments of Córdoba and Sucre, in the Orinoco region, in the department of Meta, and in the Pacific region, in the departments of Chocó and Valle del Cauca.



**Figure S5.** Spatial variation of species BED scores for snakes of the family Elapidae in Colombia. Note that maps for Elapids include a sea species (*H. platurus*) in the Pacific Ocean. Political division at departmental level are displayed for more detail.

Regarding the pattern of BED values, the Caribbean region between the departments of Sucre and Córdoba, the Gulf of Urabá including the area of the Darién strains towards the Caribbean Sea, the department of Chocó in the Pacific region, and the department of Amazonas in the Amazon region concentrate the highest values of BED in elapids.

It is important to highlight that in the case of elapids there are other areas identified as BED values hotspots that do not have any special protection, such as eastern Guainía, south-central Amazonia (Amazonian R.), northeastern Córdoba, southwestern Sucre (Caribbean R.) and southern Chocó (Pacific R.)



**Figure S6.** Spatial variation of species BED scores for snakes of the family Viperidae in Colombia. Political division at departmental level are displayed for more detail.

In contrast, the highest BED values for viperids are found in the departments of Nariño, Cauca, Valle del Cauca, and Chocó in the Pacific region, and in the department of Norte de Santander in the Andean region. Dealing with viperids, there are areas of importance according to BED values that do not have protection status, such as central-southern Amazonas, northern Caquetá (Amazonian R.), western Meta (Orinoco R.), southern Chocó, western Valle del Cauca (Pacific R.), central Antioquia and central and southern Pasto (Andean R.).

**Table s1.** Abbreviations of the 32 departments of Colombia. Taken from <https://www.iso.org/obp/ui/#iso:code:3166:CO>.

<b>Abreviación</b>	<b>Departamento</b>
AMA	Amazonas
ANT	Antioquia
ARA	Arauca
ATL	Atlántico
BOL	Bolívar
BOY	Boyacá
CAL	Caldas
CAQ	Caquetá
CAS	Casanare
CAU	Cauca
CES	César
CHO	Chocó
CUN	Cundinamarca
COR	Córdoba
GUA	Guainía
GUV	Guaviare
HUI	Huila
LAG	La Guajira
MAG	Magdalena
META	Meta
NAR	Nariño
NSA	Norte de Santander
PUT	Putumayo
QUI	Quindío
RIS	Risaralda
SAP	San Andrés, Providencia y Santa Catalina
SAN	Santander
SUC	Sucre
TOL	Tolima
VAC	Valle del Cauca
VAU	Vaupés
VID	Vichada